

Nur für Forschungszwecke

Beta Actin Monoklonaler Antikörper



Katalog-Nr.:CL594-66009

7 Publikationen

Allgemeine Informationen

Katalog-Nr.: CL594-66009	GenBank-Zugangsnummer: NM_001101	Reinigungsmethode: Protein-A-Reinigung
Größe: 100ul , Konzentration: 1000 µg/ml von60 Nanodrop;	GeneID (NCBI): actin, beta	CloneNo.: 2D4H5
Wirt: Maus	Vollständiger Name: actin, beta	Empfohlene Verdünnungen: WB 1:500-1:2000 IF 1:50-1:500
Isotyp: IgG2b	Berechnete Masse: 42 kDa	Anregungs-/Emissionsmaxima- Wellenlängen: 588 nm / 604 nm

Anwendungen

Geprüfte Anwendungen: FC (Intra), IF, WB	Positivkontrollen: WB : HepG2-Zellen, HEK-293-Zellen, HeLa-Zellen IF : MDCK-Zellen, HepG2-Zellen
In Publikationen genannte Anwendungen: WB	
Getestete Reaktivität: Affe, Hamster, Human, Maus, Ratte, Zebrafisch	
Zitierte Arten: Human, Maus, Ratte	

Hintergrundinformationen

Actins are highly conserved globular proteins that are involved in various types of cell motility and are ubiquitously expressed in all eukaryotic cells. At least six isoforms of actins are known in mammals and other vertebrates: alpha (ACTC1, cardiac muscle 1), alpha 1 (ACTA1, skeletal muscle) and 2 (ACTA2, aortic smooth muscle), beta (ACTB), gamma 1 (ACTG1) and 2 (ACTG2, enteric smooth muscle). Beta and gamma 1 are two non-muscle actin proteins. Most actins consist of 376aa, while ACTG2 (rich in muscles) has 375aa and ACTG1(found in non-muscle cells) has only 374aa. Beta actin has been widely used as the internal control in RT-PCR and Western Blotting as a 42-kDa protein. However, the 41 kDa cleaved fragment of beta actin can be generated during apoptosis process.This antibody can recognize all the actins. The isotype of this antibody is IgG2b. And the antibody is CL594(Ex/Em 593 nm/614 nm) conjugated.

Bemerkenswerte Veröffentlichungen

Verfasser	Pubmed ID	Journal	Anwendung
Jinxia Sun	35589023	J Ethnopharmacol	WB
Zhixiong Liu	35143418	J Clin Invest	WB
Wenxue Liang	35985246	Tissue Cell	WB

Lagerung

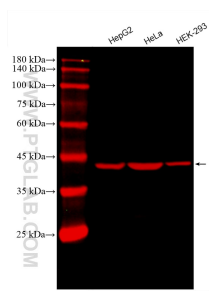
Lagerungsbedingungen:
Bei -20°C lagern. Vor Licht schützen. Nach dem Versand ein Jahr stabil.
Lagerungspuffer:
BS mit 50% Glycerin, 0,05% Proclin300, 0,5% BSA, pH 7,3.
Aliquotieren ist nicht notwendig bei -20°C Lagerung

*** 20ul-Größen enthalten 0.1% BSA

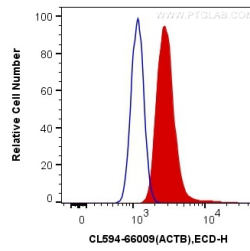
For technical support and original validation data for this product please contact:
T: 1 (888) 4PTGLAB (1-888-478-4522) (toll free in USA), or 1(312) 455-8498 (outside USA)
E: proteintech@ptglab.com
W: ptglab.com

This product is exclusively available under Proteintech Group brand and is not available to purchase from any other manufacturer.

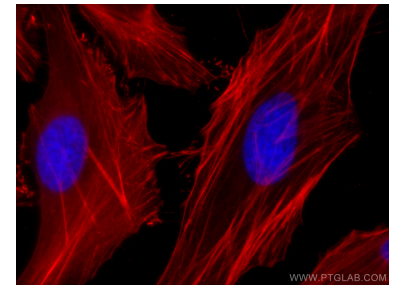
Ausgewählte Validierungsdaten



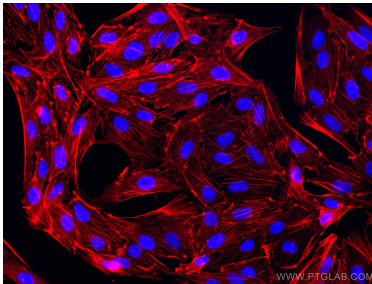
Various lysates were subjected to SDS PAGE followed by western blot with CL594-66009 (Beta Actin antibody) at dilution of 1:1000 incubated at room temperature for 1.5 hours.



1×10^6 A431 cells were intracellularly stained with 0.8 μ g CoraLite®594 Anti-Human Beta Actin (CL594-66009, Clone:2D4H5) (red), or 0.8 μ g Control Antibody. Cells were fixed with 4% PFA and permeabilized with Flow Cytometry Perm Buffer (PF00011-C).



Immunofluorescent analysis of (-20°C Methanol) fixed HepG2 cells using CoraLite®594 Beta Actin antibody (CL594-66009, Clone: 2D4H5) at dilution of 1:200.



Immunofluorescent analysis of (-20°C Methanol) fixed MDCK cells using CoraLite®594 Beta Actin antibody (CL594-66009, Clone: 2D4H5) at dilution of 1:200.