

Nur für Forschungszwecke

# MCL1 Monoklonaler Antikörper

Katalog-Nr.:CL594-66026

Vorgestelltes Produkt



## Allgemeine Informationen

<b>Katalog-Nr.:</b> CL594-66026	<b>GenBank-Zugangsnummer:</b> BC107735	<b>Reinigungsmethode:</b> Protein-A-Reinigung
<b>Größe:</b> 100ul , Konzentration: 1000 µg/ml von4170 Nanodrop;	<b>GeneID (NCBI):</b> 4170	<b>CloneNo.:</b> 1E3C2
<b>Wirt:</b> Maus	<b>Vollständiger Name:</b> myeloid cell leukemia sequence 1 (BCL2-related)	<b>Empfohlene Verdünnungen:</b> IF 1:50-1:500
<b>Isotyp:</b> IgG2b	<b>Berechnete Masse:</b> 350 aa, 37 kDa	<b>Anregungs-/Emissionsmaxima- Wellenlängen:</b> 588 nm / 604 nm
<b>Immunogen Katalognummer:</b> AG10609		

## Anwendungen

<b>Geprüfte Anwendungen:</b> IF	<b>Positivkontrollen:</b> IF : HeLa-Zellen,
<b>Getestete Reaktivität:</b> Human	

## Hintergrundinformationen

MCL-1 is an anti-apoptotic member of the Bcl-2 family originally isolated from the ML-1 human myeloid leukemia cell line. Similar to BCL2 and BCL2L1, MCL1 can interact with BAX and/or BAK1 to inhibit mitochondria-mediated apoptosis. Mcl-1 is critical for the proliferation and survival of myeloma cells in vitro, and overexpression of Mcl-1 protein in myeloma cells is associated with relapse and short event-free survival in multiple myeloma patients. Recent studies show that MCL-1 is upregulated in numerous haematological and solid tumour malignancies. Therefore, MCL-1 has been suggested as a potential new therapeutic target.

## Lagerung

**Lagerungsbedingungen:**  
Bei -20°C lagern. Vor Licht schützen.  
**Lagerungspuffer:**  
BS mit 50% Glycerin, 0,05% Proclin300, 0,5% BSA, pH 7,3.  
**Aliquotieren ist nicht notwendig bei -20°C Lagerung**

**\*\*\* 20ul-Größen enthalten 0.1% BSA**

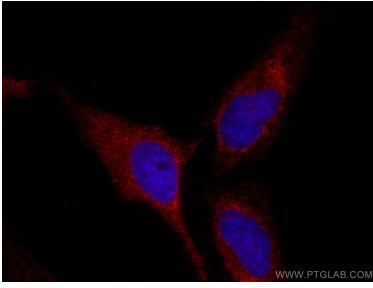
For technical support and original validation data for this product please contact:

T: 1 (888) 4PTGLAB (1-888-478-4522) (toll free  
in USA), or 1(312) 455-8498 (outside USA)

E: [proteintech@ptglab.com](mailto:proteintech@ptglab.com)  
W: [ptglab.com](http://ptglab.com)

**This product is exclusively available under Proteintech Group brand and is not available to purchase from any other manufacturer.**

## Ausgewählte Validierungsdaten



Immunofluorescent analysis of (4% PFA) fixed HeLa cells using Coralite®594 MCL1 antibody (CL594-66026, Clone: 1E3C2 ) at dilution of 1:200.