

Nur für Forschungszwecke

# Alpha Tubulin Monoklonaler Antikörper



Katalog-Nr.: CL594-66031

3 Publikationen

## Allgemeine Informationen

<b>Katalog-Nr.:</b> CL594-66031	<b>GenBank-Zugangsnummer:</b> BC009314	<b>Reinigungsmethode:</b> Protein-A-Reinigung
<b>Größe:</b> 100ul, Konzentration: 1000 µg/ml von10376 Nanodrop;	<b>GeneID (NCBI):</b> 10376	<b>CloneNo.:</b> 1E4C11
<b>Wirt:</b> Maus	<b>Vollständiger Name:</b> tubulin, alpha 1b	<b>Empfohlene Verdünnungen:</b> WB 1:300-1:500 IF 1:50-1:500
<b>Isotyp:</b> IgG2b	<b>Berechnete Masse:</b> 50 kDa	<b>Anregungs-/Emissionsmaxima-Wellenlängen:</b> 588 nm / 604 nm
<b>Immunogen Katalognummer:</b> AG18034		

## Anwendungen

<b>Geprüfte Anwendungen:</b> FC (Intra), IF, WB	<b>Positivkontrollen:</b> WB : HeLa-Zellen, HEK-293-Zellen, NIH/3T3-Zellen IF : HepG2-Zellen, HeLa-Zellen
<b>In Publikationen genannte Anwendungen:</b> IF	
<b>Getestete Reaktivität:</b> Human, Hund, Maus, Ratte	
<b>Zitierte Arten:</b> Human, Maus	

## Hintergrundinformationen

There are five tubulins in human cells: alpha, beta, gamma, delta, and epsilon. Tubulins are conserved across species. They form heterodimers, which multimerize to form a microtubule filament. An alpha and beta tubulin heterodimer is the basic structural unit of microtubules. The heterodimer does not come apart once formed. The alpha and beta tubulins, which are each about 55 kDa MW, are homologous but not identical. Alpha tubulin is useful for scientists across fields as an internal control due to its high, ubiquitous expression pattern. Tubulin expression may vary according to resistance to antimicrobial and antimetabolic drugs. This antibody is CL594(Ex/Em 593 nm/614 nm) conjugated.

## Bemerkenswerte Veröffentlichungen

Verfasser	Pubmed ID	Journal	Anwendung
Juan Lin	36430853	Int J Mol Sci	IF
Shizhen Dai	35741354	Biology (Basel)	IF
Long-Fei Wu	35354913	Exp Mol Med	IF

## Lagerung

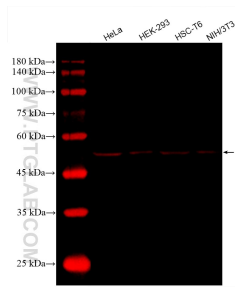
**Lagerungsbedingungen:**  
Bei -20°C lagern. Vor Licht schützen. Nach dem Versand ein Jahr stabil.  
**Lagerungspuffer:**  
BS mit 50% Glycerin, 0,05% Proclin300, 0,5% BSA, pH 7,3.  
Aliquotieren ist nicht notwendig bei -20°C Lagerung

\*\*\* 20ul-Größen enthalten 0.1% BSA

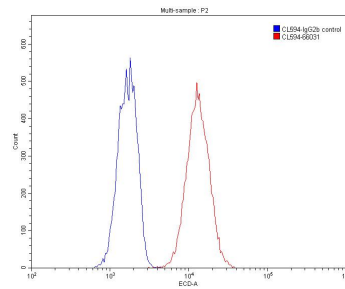
For technical support and original validation data for this product please contact:  
T: 1 (888) 4PTGLAB (1-888-478-4522) (toll free in USA), or 1(312) 455-8498 (outside USA)  
E: proteintech@ptglab.com  
W: ptglab.com

This product is exclusively available under Proteintech Group brand and is not available to purchase from any other manufacturer.

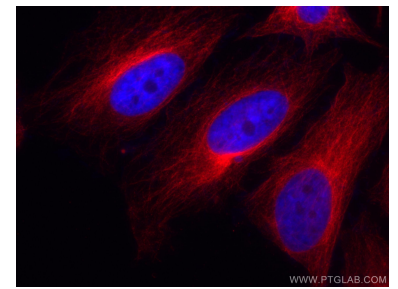
## Ausgewählte Validierungsdaten



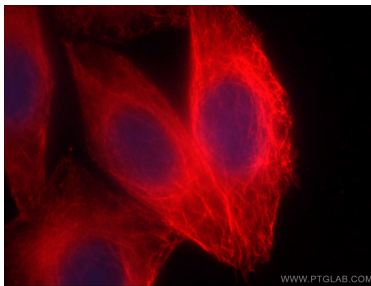
Various lysates were subjected to SDS PAGE followed by western blot with CL594-66031 (Alpha Tubulin antibody) at dilution of 1:500 incubated at room temperature for 1.5 hours.



$1 \times 10^6$  HepG2 cells were stained with 0.20ug alpha Tubulin antibody (CL594-66031, red) and control antibody (blue). Fixed with 90% MeOH.



Immunofluorescent analysis of (4% PFA) fixed HeLa cells using the Coralite® 594-conjugated version of this antibody, CL594-66031 (alpha Tubulin antibody), at dilution of 1:100.



Immunofluorescent analysis of (-20°C Ethanol) fixed HepG2 cells using CL594-66031 (alpha Tubulin antibody) at dilution of 1:100.