

Nur für Forschungszwecke

# LONP1 Monoklonaler Antikörper

Katalog-Nr.:CL594-66043



## Allgemeine Informationen

<b>Katalog-Nr.:</b> CL594-66043	<b>GenBank-Zugangsnummer:</b> BC000235	<b>Reinigungsmethode:</b> Protein-G-Reinigung
<b>Größe:</b> 100ul , Konzentration: 2000 µg/ml von9361	<b>GeneID (NCBI):</b> von9361	<b>CloneNo.:</b> 1C6C12
<b>Nanodrop;</b>	<b>Vollständiger Name:</b> Lon peptidase 1, mitochondrial	<b>Empfohlene Verdünnungen:</b> IF 1:50-1:500
<b>Wirt:</b> Maus	<b>Berechnete Masse:</b> 106 kDa	<b>Anregungs-/Emissionsmaxima-Wellenlängen:</b> 588 nm / 604 nm
<b>Isotyp:</b> IgG1	<b>Beobachtete Masse:</b> 100 kDa	
<b>Immunogen Katalognummer:</b> AG7306		

## Anwendungen

<b>Geprüfte Anwendungen:</b> IF	<b>Positivkontrollen:</b> IF : C6-Zellen,
<b>Getestete Reaktivität:</b> Human, Maus, Ratte	

## Hintergrundinformationen

LONP1(Lon protease homolog, mitochondrial) is also named as LONP, LONHS, HLON, LON, PRSS15, PIM1, MGC1498 and belongs to the peptidase S16 family. It seems to play a major role in the elimination of oxidatively modified proteins in the mitochondrial matrix(PMID:18021745). LONP1, also a nuclearly encoded and mitochondrially located stress-responsive protease, is involved in heme-mediated ALAS-1 turnover(PMID:21659532). It recognizes specific surface determinants or folds, initiates proteolysis at solvent-accessible sites, and generates unfolded polypeptides that are then processively degraded(PMID:15870080).

## Lagerung

**Lagerungsbedingungen:**  
Bei -20°C lagern. Vor Licht schützen. Nach dem Versand ein Jahr stabil.  
**Lagerungspuffer:**  
BS mit 50% Glycerin, 0,05% Proclin300, 0,5% BSA, pH 7,3.  
**Aliquotieren ist nicht notwendig bei -20°C Lagerung**

**\*\*\* 20ul-Größen enthalten 0.1% BSA**

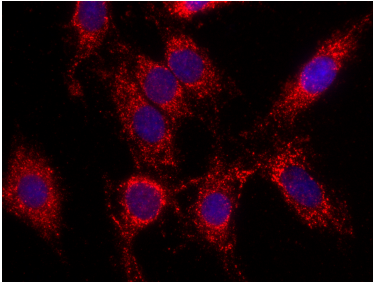
For technical support and original validation data for this product please contact:

T: 1 (888) 4PTGLAB (1-888-478-4522) (toll free in USA), or 1(312) 455-8498 (outside USA)

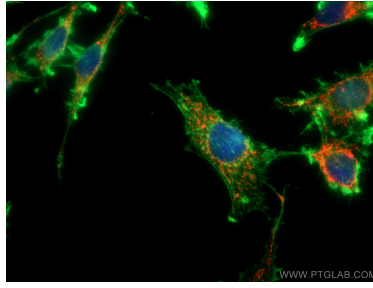
E: [proteintech@ptglab.com](mailto:proteintech@ptglab.com)  
W: [ptglab.com](http://ptglab.com)

**This product is exclusively available under Proteintech Group brand and is not available to purchase from any other manufacturer.**

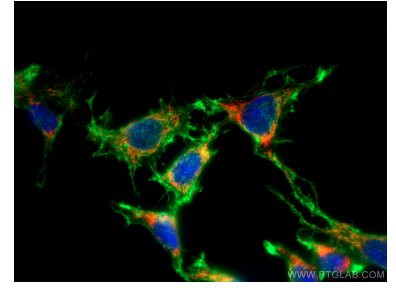
## Ausgewählte Validierungsdaten



Immunofluorescent analysis of (4% PFA) fixed C6 cells using Coralite®594 LONP1 antibody (CL594-66043, Clone: 1C6C12) at dilution of 1:100. DAPI (blue).



Immunofluorescent analysis of (4% PFA) fixed C6 cells using Coralite®594 LONP1 antibody (CL594-66043, Clone: 1C6C12) at dilution of 1:100, CL488-phalloidine (green).



Immunofluorescent analysis of (-20°C Ethanol) fixed C6 cells using Coralite®594 LONP1 antibody (CL594-66043, Clone: 1C6C12) at dilution of 1:100, CL488-phalloidine (green).