

Nur für Forschungszwecke

# RAB27A Monoklonaler Antikörper

Katalog-Nr.:CL594-66058

Vorgestelltes Produkt



## Allgemeine Informationen

|   |  |  |
|---|--|--|
| <b>Katalog-Nr.:</b><br>CL594-66058                                      | <b>GenBank-Zugangsnummer:</b><br>BC107680                        | <b>Reinigungsmethode:</b><br>Protein-G-Reinigung                   |
| <b>Größe:</b><br>100ul , Konzentration: 1000 µg/ml von5873<br>Nanodrop; | <b>GeneID (NCBI):</b><br>5873                                    | <b>CloneNo.:</b><br>1C4B8  |
| <b>Wirt:</b><br>Maus  | <b>Vollständiger Name:</b><br>RAB27A, member RAS oncogene family | <b>Empfohlene Verdünnungen:</b><br>IF 1:50-1:500                   |
| <b>Isotyp:</b><br>IgG1  | <b>Berechnete Masse:</b><br>221 aa, 25 kDa                       | <b>Anregungs-/Emissionsmaxima-Wellenlängen:</b><br>588 nm / 604 nm |
| <b>Immunogen Katalognummer:</b><br>AG12382                              | <b>Beobachtete Masse:</b><br>27 kDa                              |  |

## Anwendungen

|  |  |
|--|--|
| <b>Geprüfte Anwendungen:</b><br>IF     | <b>Positivkontrollen:</b><br>IF : HeLa-Zellen, |
| <b>Getestete Reaktivität:</b><br>Human |  |

## Hintergrundinformationen

Rab27a is a member of a large family of Ras-related small GTPases. The protein is membrane-bound and may be involved in protein transport and small GTPase mediated signal transduction. Recent studies suggest that Rab27a is associated with melanosomes in pigmented cells and regulates melanosome transport via its interaction with actin-based cellular motors such as myosin Va and myosin VIIa. RAB27A is also required for regulated secretion in cytotoxic T lymphocytes. Rab27a is implicated in several diseases, including Griscelli syndrome, choroideremia, and the Hermansky-Pudlak syndrome mouse model, gunmetal.

## Lagerung

**Lagerungsbedingungen:**  
Bei -20°C lagern. Vor Licht schützen. Nach dem Versand ein Jahr stabil.  
**Lagerungspuffer:**  
BS mit 50% Glycerin, 0,05% Proclin300, 0,5% BSA, pH 7,3.  
**Aliquotieren ist nicht notwendig bei -20°C Lagerung**

**\*\*\* 20ul-Größen enthalten 0.1% BSA**

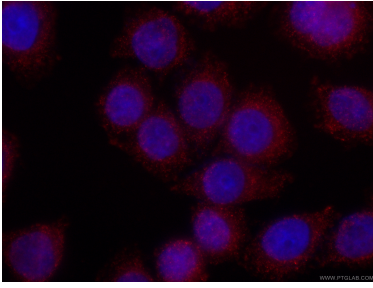
For technical support and original validation data for this product please contact:

T: 1 (888) 4PTGLAB (1-888-478-4522) (toll free in USA), or 1(312) 455-8498 (outside USA)

E: [proteintech@ptglab.com](mailto:proteintech@ptglab.com)  
W: [ptglab.com](http://ptglab.com)

**This product is exclusively available under Proteintech Group brand and is not available to purchase from any other manufacturer.**

## Ausgewählte Validierungsdaten



Immunofluorescent analysis of (-20°C Ethanol) fixed HeLa cells using CL594-66058 (RAB27A antibody) at dilution of 1:100.