

Nur für Forschungszwecke

# RBM15 Monoklonaler Antikörper

Katalog-Nr.:CL594-66059

Vorgestelltes Produkt



## Allgemeine Informationen

<b>Katalog-Nr.:</b> CL594-66059	<b>GenBank-Zugangsnummer:</b> BC006397	<b>Reinigungsmethode:</b> Protein-A-Reinigung
<b>Größe:</b> 100ul , Konzentration: 1000 µg/ml von64783	<b>GeneID (NCBI):</b> 64783	<b>CloneNo.:</b> 4A1A4
<b>Nanodrop;</b>	<b>Vollständiger Name:</b> RNA binding motif protein 15	<b>Empfohlene Verdünnungen:</b> IF 1:50-1:500
<b>Wirt:</b> Maus	<b>Berechnete Masse:</b> 105 kDa	<b>Anregungs-/Emissionsmaxima-Wellenlängen:</b> 588 nm / 604 nm
<b>Isotyp:</b> IgG2a	<b>Beobachtete Masse:</b> 107 kDa	
<b>Immunogen Katalognummer:</b> AG17970		

## Anwendungen

<b>Geprüfte Anwendungen:</b> FC (Intra), IF	<b>Positivkontrollen:</b> IF : HeLa-Zellen,
<b>Getestete Reaktivität:</b> Human	

## Hintergrundinformationen

RNA-binding motif protein 15 (RBM15) belongs to the SPEN protein family, which have repressor function in several signaling pathway, and may bind to RNA through interaction with spliceosome components. It was first described as a 5' translocation partner of the MAL gene in t(1,22)(p13;q13) infant acute megakaryocytic leukemia, and it functions in murine hematopoiesis through modulating Notch-induced transcriptional activation, which play crucial roles in leukemogenesis. Decreasing RBM15 levels with RNA interference could inhibit the growth and proliferation, block the cell cycle, and induce apoptosis in CML cells.

## Lagerung

**Lagerungsbedingungen:**  
Bei -20°C lagern. Vor Licht schützen.  
**Lagerungspuffer:**  
BS mit 50% Glycerin, 0,05% Proclin300, 0,5% BSA, pH 7,3.  
**Aliquotieren ist nicht notwendig bei -20°C Lagerung**

\*\*\* 20ul-Größen enthalten 0.1% BSA

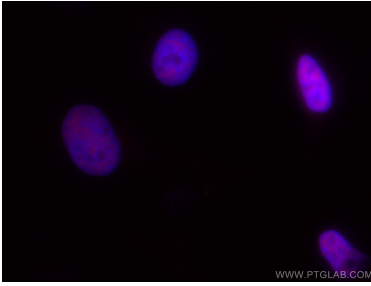
For technical support and original validation data for this product please contact:

T: 1 (888) 4PTGLAB (1-888-478-4522) (toll free in USA), or 1(312) 455-8498 (outside USA)

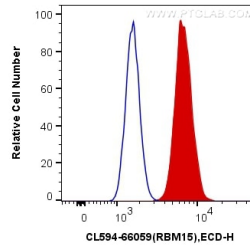
E: [proteintech@ptglab.com](mailto:proteintech@ptglab.com)  
W: [ptglab.com](http://ptglab.com)

This product is exclusively available under Proteintech Group brand and is not available to purchase from any other manufacturer.

## Ausgewählte Validierungsdaten



Immunofluorescent analysis of (4% PFA) fixed HeLa cells using CoraLite@594 RBM15 antibody (CL594-66059, Clone: 4A1A4) at dilution of 1:200.



$1 \times 10^6$  HeLa cells were intracellularly stained with 0.4  $\mu$ g CoraLite@594 Anti-Human RBM15 (CL594-66059, Clone: 4A1A4) (red), or 0.4  $\mu$ g Mouse IgG2a Isotype Control (CL594-66360-2, Clone: K11A1BZ2) (blue). Cells were fixed and permeabilized with Transcription Factor Staining Buffer Kit (PF00011).