

Nur für Forschungszwecke

PDH E1 Alpha Monoklonaler Antikörper



Katalog-Nr.:CL594-66119

Vorgestelltes Produkt

Allgemeine Informationen

Katalog-Nr.: CL594-66119	GenBank-Zugangsnummer: BC002406	Reinigungsmethode: Protein-A-Reinigung
Größe: 100ul , Konzentration: 1000 µg/ml von5160 Nanodrop;	GeneID (NCBI): 5160	CloneNo.: 2B3C10
Wirt: Maus	Vollständiger Name: pyruvate dehydrogenase (lipoamide) alpha 1	Empfohlene Verdünnungen: WB 1:500-1:2000
Isotyp: IgG2a	Berechnete Masse: 43 kDa	Anregungs-/Emissionsmaxima-Wellenlängen: 588 nm / 604 nm
Immunogen Katalognummer: AG12556	Beobachtete Masse: 43 kDa	

Anwendungen

Geprüfte Anwendungen: FC (Intra), WB	Positivkontrollen: WB : HepG2-Zellen, HEK-293-Zellen
Getestete Reaktivität: Human	

Hintergrundinformationen

PDHA1(Pyruvate dehydrogenase E1 component subunit alpha, somatic form, mitochondrial) is also named as PHE1A.It is one of the 3 enzymes of the pyruvate dehydrogenase complex which is a nuclear-encoded mitochondrial matrix multienzyme complex that provides the primary link between glycolysis and the tricarboxylic acid (TCA) cycle by catalyzing the irreversible conversion of pyruvate into acetyl-CoA(PMID:7853374).It has 4 isoforms produced by alternative splicing.Defects in PDHA1 are a cause of pyruvate dehydrogenase E1-alpha deficiency (PDHAD) and X-linked Leigh syndrome (X-LS).

Lagerung

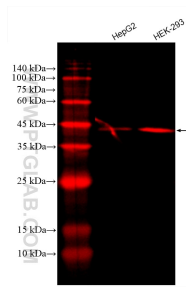
Lagerungsbedingungen:
Bei -20°C lagern. Vor Licht schützen. Nach dem Versand ein Jahr stabil.
Lagerungspuffer:
BS mit 50% Glycerin, 0,05% Proclin300, 0,5% BSA, pH 7,3.
Aliquotieren ist nicht notwendig bei -20°C Lagerung

*** 20ul-Größen enthalten 0.1% BSA

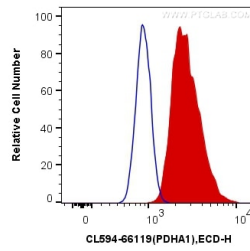
For technical support and original validation data for this product please contact:
T: 1 (888) 4PTGLAB (1-888-478-4522) (toll free in USA), or 1(312) 455-8498 (outside USA)
E: proteintech@ptglab.com
W: ptglab.com

This product is exclusively available under Proteintech Group brand and is not available to purchase from any other manufacturer.

Ausgewählte Validierungsdaten



Various lysates were subjected to SDS PAGE followed by western blot with CL594-66119 (PDH E1 Alpha antibody) at dilution of 1:1000 incubated at room temperature for 1.5 hours.



1×10^6 HepG2 cells were intracellularly stained with 0.4 μ g CoraLite[®]594 Anti-Human PDH E1 Alpha (CL594-66119, Clone:2B3C10) (red), or 0.4 μ g Mouse IgG2a Isotype Control (CL594-66360-2, Clone: K11A1B2A2) (blue). Cells were fixed with 4% PFA and permeabilized with Flow Cytometry Perm Buffer (PF00011-C).