

Nur für Forschungszwecke

Aldolase C Monoklonaler Antikörper

Katalog-Nr.:CL594-66120



Allgemeine Informationen

Katalog-Nr.: CL594-66120	GenBank-Zugangsnummer: BC003613	Reinigungsmethode: Protein-G-Reinigung
Größe: 100ul , Konzentration: 1000 µg/ml von230 Nanodrop;	GeneID (NCBI): 5H7A5	CloneNo.: 5H7A5
Wirt: Maus	Vollständiger Name: aldolase C, fructose-bisphosphate	Empfohlene Verdünnungen: IF 1:50-1:500
Isotyp: IgG1	Berechnete Masse: 39 kDa	Anregungs-/Emissionsmaxima-Wellenlängen: 588 nm / 604 nm
Immunogen Katalognummer: AG6779	Beobachtete Masse: 39 kDa	

Anwendungen

Geprüfte Anwendungen: IF	Positivkontrollen: IF : HepG2-Zellen,
Getestete Reaktivität: Human	

Hintergrundinformationen

Fructose-bisphosphate aldolase C (ALDOC) reversibly cleaves FBP and F1-P to glyceraldehyde 3-phosphate and dihydroxyacetone phosphate and is strongly expressed in mammalian brain together with ALDOA and is also present in the heart and spleen of some species(PMID:9363598). It is involved in glycolysis as an important enzyme. Phospholipase D2 and inositol 1,4,5-triphosphate interact with ALDOC in signal transduction. Meanwhile, the protein expression of ALDOC has been reported to be regulated in brain tumor, hepatomas, and lung cancer(PMID:21548097).

Lagerung

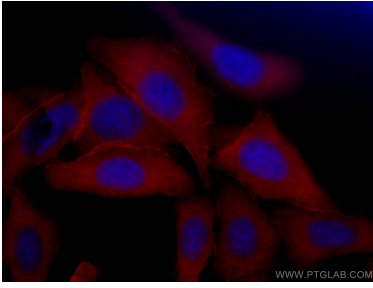
Lagerungsbedingungen:
Bei -20°C lagern. Vor Licht schützen.
Lagerungspuffer:
BS mit 50% Glycerin, 0,05% Proclin300, 0,5% BSA, pH 7,3.
Aliquotieren ist nicht notwendig bei -20°C Lagerung

***** 20ul-Größen enthalten 0.1% BSA**

For technical support and original validation data for this product please contact:
T: 1 (888) 4PTGLAB (1-888-478-4522) (toll free in USA), or 1(312) 455-8498 (outside USA)
E: proteintech@ptglab.com
W: ptglab.com

This product is exclusively available under Proteintech Group brand and is not available to purchase from any other manufacturer.

Ausgewählte Validierungsdaten



Immunofluorescent analysis of (-20°C Ethanol) fixed HepG2 cells using CoraLite®594-conjugated Aldolase C antibody (CL594-66120, Clone: 5H7A5) at dilution of 1:100.