

Nur für Forschungszwecke

RPL3 Monoklonaler Antikörper

Katalog-Nr.:CL594-66130



Allgemeine Informationen

Katalog-Nr.: CL594-66130	GenBank-Zugangsnummer: BC012786	Reinigungsmethode: Protein-G-Reinigung
Größe: 100ul , Konzentration: 1000 µg/ml von6122 Nanodrop;	GeneID (NCBI): Vollständiger Name: ribosomal protein L3	CloneNo.: 2G1B8
Wirt: Maus	Berechnete Masse: 46/27 kDa	Empfohlene Verdünnungen: WB 1:500-1:1000 IF 1:50-1:500
Isotyp: IgG1	Beobachtete Masse: 46 kDa	Anregungs-/Emissionsmaxima-Wellenlängen: 588 nm / 604 nm
Immunogen Katalognummer: AG20400		

Anwendungen

Geprüfte Anwendungen: IF, WB	Positivkontrollen: WB : HEK-293-Zellen, HeLa-Zellen, Jurkat-Zellen
Getestete Reaktivität: Human, Maus, Ratte	IF : HepG2-Zellen,

Hintergrundinformationen

Ribosomes, the complexes that catalyze protein synthesis, consist of a small 40S subunit and a large 60S subunit. Together these subunits are composed of 4 RNA species and approximately 80 structurally distinct proteins. RPL3, also named as TARBP-B and MGC104284, belongs to the ribosomal protein L3P family. This protein is a component of the 60S subunit. It can bind to the HIV-1 TAR mRNA, and it has been suggested that the protein contributes to tat-mediated transactivation. As is typical for genes encoding ribosomal proteins, there are multiple processed pseudogenes of this gene dispersed through the genome.

Lagerung

Lagerungsbedingungen:
Bei -20°C lagern. Vor Licht schützen. Nach dem Versand ein Jahr stabil.
Lagerungspuffer:
BS mit 50% Glycerin, 0,05% Proclin300, 0,5% BSA, pH 7,3.
Aliquotieren ist nicht notwendig bei -20°C Lagerung

***** 20ul-Größen enthalten 0.1% BSA**

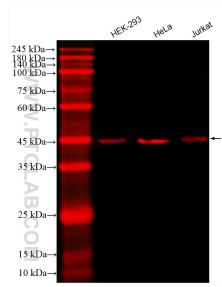
For technical support and original validation data for this product please contact:

T: 1 (888) 4PTGLAB (1-888-478-4522) (toll free in USA), or 1(312) 455-8498 (outside USA)

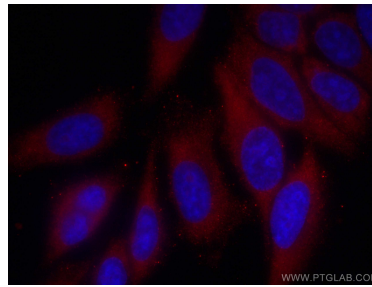
E: proteintech@ptglab.com
W: ptglab.com

This product is exclusively available under Proteintech Group brand and is not available to purchase from any other manufacturer.

Ausgewählte Validierungsdaten



Various lysates were subjected to SDS PAGE followed by western blot with CL594-66130 (RPL3 antibody) at dilution of 1:500 incubated at room temperature for 1.5 hours.



Immunofluorescent analysis of (-20°C Methanol) fixed HepG2 cells using CoraLite® 594 RPL3 antibody (CL594-66130, Clone: 2G1B8) at dilution of 1:200.