

Nur für Forschungszwecke

BBS5 Monoklonaler Antikörper

Katalog-Nr.:CL594-66136



Allgemeine Informationen

Katalog-Nr.: CL594-66136	GenBank-Zugangsnummer: BC044593	Reinigungsmethode: Protein-G-Reinigung
Größe: 100ul , Konzentration: 1000 µg/ml von129880 Nanodrop;	GeneID (NCBI): 129880	CloneNo.: 4G8E12
Wirt: Maus	Vollständiger Name: Bardet-Biedl syndrome 5	Empfohlene Verdünnungen: IF 1:50-1:500
Isotyp: IgG1	Berechnete Masse: 39 kDa	Anregungs-/Emissionsmaxima-Wellenlängen: 588 nm / 604 nm
Immunogen Katalognummer: AG6844		

Anwendungen

Geprüfte Anwendungen: IF	Positivkontrollen: IF : humanes Nierengewebe,
Getestete Reaktivität: Human, Maus	

Hintergrundinformationen

BBS5 encodes a protein that has been directly linked to Bardet-Biedl syndrome. Bardet-Biedl syndrome (BBS) is an autosomal recessive condition characterised by rod-cone dystrophy, postaxial polydactyly, central obesity, mental retardation, hypogonadism, and renal dysfunction. Other associated clinical findings in BBS patients include diabetes, hypertension and congenital heart defects. BBS expression varies both within and between families and diagnosis is often difficult. Experimentation in non-human eukaryotes suggests that BBS5 is expressed in ciliated cells and that it is required for the formation of cilia. Alternate transcriptional splice variants have been observed but have not been fully characterized.

Lagerung

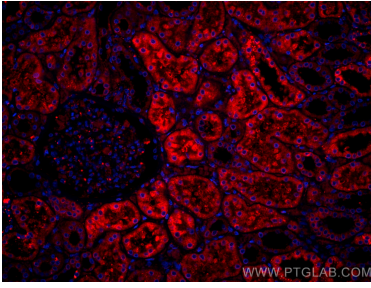
Lagerungsbedingungen:
Bei -20°C lagern. Vor Licht schützen.
Lagerungspuffer:
BS mit 50% Glycerin, 0,05% Proclin300, 0,5% BSA, pH 7,3.
Aliquotieren ist nicht notwendig bei -20°C Lagerung

***** 20ul-Größen enthalten 0.1% BSA**

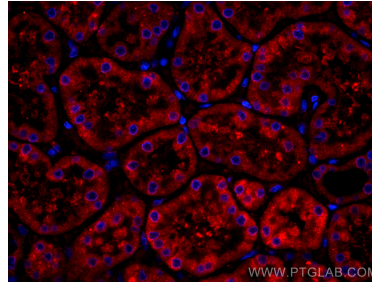
For technical support and original validation data for this product please contact:
T: 1 (888) 4PTGLAB (1-888-478-4522) (toll free in USA), or 1(312) 455-8498 (outside USA)
E: proteintech@ptglab.com
W: ptglab.com

This product is exclusively available under Proteintech Group brand and is not available to purchase from any other manufacturer.

Ausgewählte Validierungsdaten



Immunofluorescent analysis of (4% PFA) fixed human kidney tissue using CoraLite®594 BBS5 antibody (CL594-66136, Clone: 4G8E12) at dilution of 1:100.



Immunofluorescent analysis of (4% PFA) fixed human kidney tissue using CoraLite®594 BBS5 antibody (CL594-66136, Clone: 4G8E12) at dilution of 1:100.