

Nur für Forschungszwecke

Beta-2-Microglobulin Monoklonaler Antikörper



Katalog-Nr.:CL594-66207

Allgemeine Informationen

Katalog-Nr.: CL594-66207	GenBank-Zugangsnummer: BC032589	Reinigungsmethode: Protein-A-Reinigung
Größe: 100ul , Konzentration: 1000 µg/ml von567 Nanodrop;	GeneID (NCBI): 1000000000	CloneNo.: 1C3B7
Wirt: Maus	Vollständiger Name: beta-2-microglobulin	Empfohlene Verdünnungen: IF 1:50-1:500
Isotyp: IgG2b	Berechnete Masse: 14 kDa	Anregungs-/Emissionsmaxima- Wellenlängen: 588 nm / 604 nm
	Beobachtete Masse: 13 kDa	

Anwendungen

Geprüfte Anwendungen: IF	Positivkontrollen: IF : humanes Prostatakarzinomgewebe,
Getestete Reaktivität: Human	

Hintergrundinformationen

Beta-2-microglobulin (B2M) is a component of MHC class I molecules, which are present on the surface of nearly all nucleated cells. It can be found in body fluids under physiologic conditions as a result of shedding from cell surfaces or intracellular release. B2M has various biological functions, including antigen presentation. Investigations reveal that increased synthesis and release of B2M are present in several malignant diseases.

Lagerung

Lagerungsbedingungen:
Bei -20°C lagern. Vor Licht schützen. Nach dem Versand ein Jahr stabil.
Lagerungspuffer:
BS mit 50% Glycerin, 0,05% Proclin300, 0,5% BSA, pH 7,3.
Aliquotieren ist nicht notwendig bei -20°C Lagerung

*** 20ul-Größen enthalten 0.1% BSA

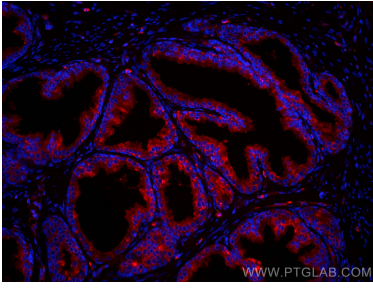
For technical support and original validation data for this product please contact:

T: 1 (888) 4PTGLAB (1-888-478-4522) (toll free
in USA), or 1(312) 455-8498 (outside USA)

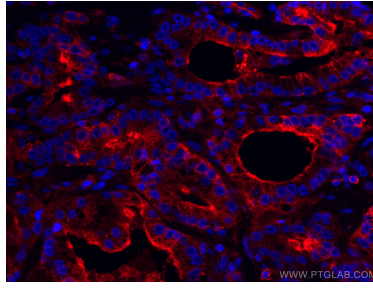
E: proteintech@ptglab.com
W: ptglab.com

This product is exclusively available under Proteintech Group brand and is not available to purchase from any other manufacturer.

Ausgewählte Validierungsdaten



Immunofluorescent analysis of (4% PFA) fixed human prostate cancer tissue using CoraLite®594 Beta-2-Microglobulin antibody (CL594-66207, Clone: 1C3B7) at dilution of 1:200.



Immunofluorescent analysis of (4% PFA) fixed human prostate cancer tissue using CoraLite®594 Beta-2-Microglobulin antibody (CL594-66207, Clone: 1C3B7) at dilution of 1:100.