

Nur für Forschungszwecke

# Mammaglobin A Monoklonaler Antikörper



Katalog-Nr.:CL594-66237

## Allgemeine Informationen

<b>Katalog-Nr.:</b> CL594-66237	<b>GenBank-Zugangsnummer:</b> BC128252	<b>Reinigungsmethode:</b> Protein-G-Reinigung
<b>Größe:</b> 100ul , Konzentration: 1000 µg/ml von4250 Nanodrop;	<b>GeneID (NCBI):</b> secretoglobin, family 2A, member 2	<b>CloneNo.:</b> 2E5D4
<b>Wirt:</b> Maus	<b>Vollständiger Name:</b> secretoglobin, family 2A, member 2	<b>Empfohlene Verdünnungen:</b> IF 1:50-1:500
<b>Isotyp:</b> IgG1	<b>Berechnete Masse:</b> 93 aa, 10 kDa	<b>Anregungs-/Emissionsmaxima-Wellenlängen:</b> 588 nm / 604 nm
<b>Immunogen Katalognummer:</b> AG22485		

## Anwendungen

<b>Geprüfte Anwendungen:</b> IF	<b>Positivkontrollen:</b> IF : humanes Mammakarzinomgewebe,
<b>Getestete Reaktivität:</b> Human	

## Hintergrundinformationen

Mammaglobin A, also known as SCGB2A2, is a member of the secretoglobin superfamily. Mammaglobin A is a breast cancer-associated antigen almost exclusively over-expressed in primary and metastatic human breast cancers, making it a specific molecular marker and a potential therapeutic target for breast cancer. This monoclonal antibody is raised against full-length of 93-amino acid human mammaglobin A.

## Lagerung

**Lagerungsbedingungen:**  
Bei -20°C lagern. Vor Licht schützen.  
**Lagerungspuffer:**  
BS mit 50% Glycerin, 0,05% Proclin300, 0,5% BSA, pH 7,3.  
Aliquotieren ist nicht notwendig bei -20°C Lagerung

\*\*\* 20ul-Größen enthalten 0.1% BSA

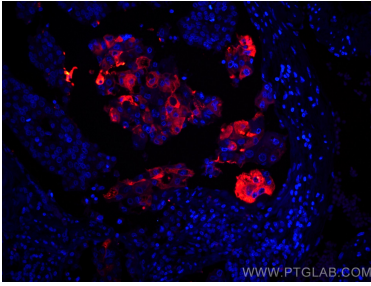
For technical support and original validation data for this product please contact:

T: 1 (888) 4PTGLAB (1-888-478-4522) (toll free in USA), or 1(312) 455-8498 (outside USA)

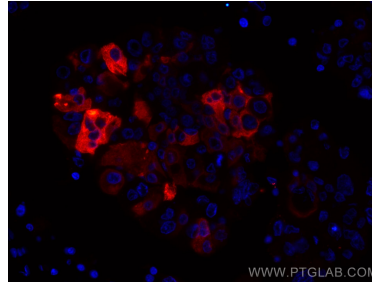
E: proteintech@ptglab.com  
W: ptglab.com

This product is exclusively available under Proteintech Group brand and is not available to purchase from any other manufacturer.

## Ausgewählte Validierungsdaten



Immunofluorescent analysis of (4% PFA) fixed human breast cancer tissue using CoraLite®594 Mammaglobin A antibody (CL594-66237, Clone: 2E5D4 ) at dilution of 1:200.



Immunofluorescent analysis of (4% PFA) fixed human breast cancer tissue using CoraLite®594 Mammaglobin A antibody (CL594-66237, Clone: 2E5D4 ) at dilution of 1:200.