

Nur für Forschungszwecke

Beta Tubulin Monoklonaler Antikörper



Katalog-Nr.:CL594-66240

1 Publikationen

Allgemeine Informationen

Katalog-Nr.: CL594-66240	GenBank-Zugangsnummer: BC000748	Reinigungsmethode: Protein-A-Reinigung
Größe: 100ul , Konzentration: 2000 µg/ml von10381 Nanodrop;	GeneID (NCBI): 10381	CloneNo.: 1D4A4
Wirt: Maus	Vollständiger Name: tubulin, beta 3	Empfohlene Verdünnungen: IF 1:50-1:500
Isotyp: IgG2a	Berechnete Masse: 450 aa, 50 kDa	Anregungs-/Emissionsmaxima-Wellenlängen: 588 nm / 604 nm
Immunogen Katalognummer: AG0117	Beobachtete Masse: 50-55 kDa	

Anwendungen

Geprüfte Anwendungen: FC (Intra), IF	Positivkontrollen: IF : SH-SY5Y-Zellen,
In Publikationen genannte Anwendungen: IF	
Getestete Reaktivität: Hausschwein, Human, Maus, Nematode, Ratte, Zebrafisch	

Hintergrundinformationen

There are five tubulins in human cells: alpha, beta, gamma, delta, and epsilon. Tubulins are conserved across species. They form heterodimers, which multimerize to form a microtubule filament. An alpha and beta tubulin heterodimer is the basic structural unit of microtubules. The heterodimer does not come apart, once formed. The alpha and beta tubulins, which are each about 55 kDa MW, are homologous but not identical. Alpha and beta tubulins have been widely used as loading controls. Tubulin expression may vary according to resistance to antimicrobial and antimetabolic drugs.

Bemerkenswerte Veröffentlichungen

Verfasser	Pubmed ID	Journal	Anwendung
Wen Lu	36945460	bioRxiv	IF

Lagerung

Lagerungsbedingungen:
Bei -20°C lagern. Vor Licht schützen. Nach dem Versand ein Jahr stabil.
Lagerungspuffer:
BS mit 50% Glycerin, 0,05% Proclin300, 0,5% BSA, pH 7,3.
Aliquotieren ist nicht notwendig bei -20°C Lagerung

*** 20ul-Größen enthalten 0.1% BSA

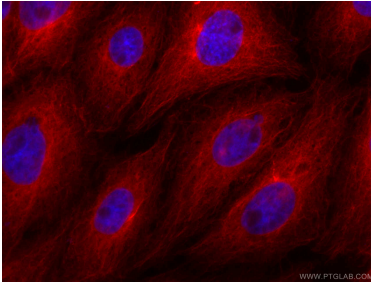
For technical support and original validation data for this product please contact:

T: 1 (888) 4PTGLAB (1-888-478-4522) (toll free in USA), or 1(312) 455-8498 (outside USA)

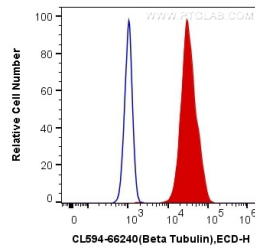
E: proteintech@ptglab.com
W: ptglab.com

This product is exclusively available under Proteintech Group brand and is not available to purchase from any other manufacturer.

Ausgewählte Validierungsdaten



Immunofluorescent analysis of (4% PFA) fixed SH-SY5Y cells using the CoraLite®594-conjugated version of this antibody, CL594-66240 (beta Tubulin antibody), at dilution of 1:100.



1X10⁶ HeLa cells were intracellularly stained with 0.4 ug CoraLite®594 Anti-Human Beta Tubulin (CL594-66240, Clone:1D4A4) (red), or 0.4 ug Mouse IgG2a Isotype Control (CL594-66360-2, Clone: K11A1B2A2) (blue). Cells were fixed with 4% PFA and permeabilized with Flow Cytometry Perm Buffer (PF00011-C).