

Nur für Forschungszwecke

# 14-3-3 Sigma Monoklonaler Antikörper

Katalog-Nr.:CL594-66251



## Allgemeine Informationen

<b>Katalog-Nr.:</b> CL594-66251	<b>GenBank-Zugangsnummer:</b> BC002995	<b>Reinigungsmethode:</b> Protein-G-Reinigung
<b>Größe:</b> 100ul , Konzentration: 1000 µg/ml von2810 Nanodrop;	<b>GeneID (NCBI):</b> 2810	<b>CloneNo.:</b> 3F10D9
<b>Wirt:</b> Maus	<b>Vollständiger Name:</b> stratifin	<b>Empfohlene Verdünnungen:</b> IF 1:50-1:500
<b>Isotyp:</b> IgG1	<b>Berechnete Masse:</b> 28 kDa	<b>Anregungs-/Emissionsmaxima-Wellenlängen:</b> 588 nm / 604 nm
<b>Immunogen Katalognummer:</b> AG12644	<b>Beobachtete Masse:</b> 28-30 kDa	

## Anwendungen

<b>Geprüfte Anwendungen:</b> FC (Intra), IF	<b>Positivkontrollen:</b> IF : MCF-7-Zellen,
<b>Getestete Reaktivität:</b> Human	

## Hintergrundinformationen

14-3-3 Sigma is a member 14-3-3 family of highly conserved proteins participating in diverse cellular processes including cell cycle progression. It is exclusively present in various epithelial cells, and alternatively named as human epithelial marker (HEM), or stratifin. Alteration of its expression has been linked to cancer.

## Lagerung

**Lagerungsbedingungen:**  
Bei -20°C lagern. Vor Licht schützen.  
**Lagerungspuffer:**  
BS mit 50% Glycerin, 0,05% Proclin300, 0,5% BSA, pH 7,3.  
**Aliquotieren ist nicht notwendig bei -20°C Lagerung**

\*\*\* 20ul-Größen enthalten 0.1% BSA

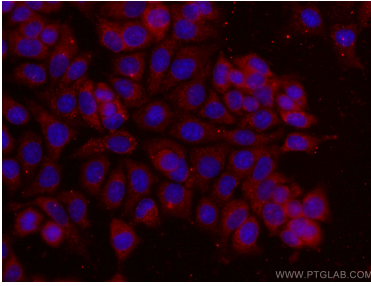
For technical support and original validation data for this product please contact:

T: 1 (888) 4PTGLAB (1-888-478-4522) (toll free in USA), or 1(312) 455-8498 (outside USA)

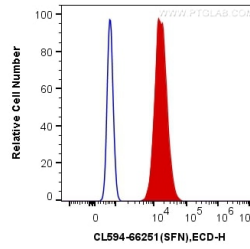
E: [proteintech@ptglab.com](mailto:proteintech@ptglab.com)  
W: [ptglab.com](http://ptglab.com)

This product is exclusively available under Proteintech Group brand and is not available to purchase from any other manufacturer.

## Ausgewählte Validierungsdaten



Immunofluorescent analysis of (-20°C Ethanol) fixed MCF-7 cells using CoraLite@594 14-3-3 Sigma antibody (CL594-66251, Clone: 3F10D9) at dilution of 1:100.



1X10<sup>6</sup> A431 cells were intracellularly stained with 0.2 ug CoraLite@594 Anti-Human 14-3-3 Sigma (CL594-66251, Clone:3F10D9) (red), or 0.2 ug Mouse IgG1 Isotype Control (CL594-66360, Clone: T1F8D3F10) (blue). Cells were fixed with 4% PFA and permeabilized with Flow Cytometry Perm Buffer (PF00011-C).