

Nur für Forschungszwecke

# Gamma Tubulin Monoklonaler Antikörper

Katalog-Nr.:CL594-66320



## Allgemeine Informationen

<b>Katalog-Nr.:</b> CL594-66320	<b>GenBank-Zugangsnummer:</b> BC000619	<b>Reinigungsmethode:</b> Protein-A-Reinigung
<b>Größe:</b> 100ul , Konzentration: 1000 µg/ml von7283 Nanodrop;	<b>GeneID (NCBI):</b> tubulin, gamma 1	<b>CloneNo.:</b> 3F9H8
<b>Wirt:</b> Maus	<b>Vollständiger Name:</b> tubulin, gamma 1	<b>Empfohlene Verdünnungen:</b> IF 1:50-1:500
<b>Isotyp:</b> IgG2a	<b>Berechnete Masse:</b> 51 kDa	<b>Anregungs-/Emissionsmaxima-Wellenlängen:</b> 588 nm / 604 nm
<b>Immunogen Katalognummer:</b> AG23913	<b>Beobachtete Masse:</b> 48-55 kDa	

## Anwendungen

<b>Geprüfte Anwendungen:</b> FC (Intra), IF	<b>Positivkontrollen:</b> IF : MDCK-Zellen,
<b>Getestete Reaktivität:</b> Human, Hund, Maus, Ratte	

## Hintergrundinformationen

Gamma tubulin is a member of tubulin superfamily and is a key component required for microtubule nucleation and stabilization. It is concentrated at the pericentriolar material of centrosomes in interphase cells, predominantly on spindle poles in mitotic cells, while found in midbodies during cytokinesis. Overexpression of gamma tubulin has been found in various cancers including breast cancer and gliomas. This antibody can well label the centrosome structure.

## Lagerung

**Lagerungsbedingungen:**  
Bei -20°C lagern. Vor Licht schützen. Nach dem Versand ein Jahr stabil.  
**Lagerungspuffer:**  
BS mit 50% Glycerin, 0,05% Proclin300, 0,5% BSA, pH 7,3.  
Aliquotieren ist nicht notwendig bei -20°C Lagerung

\*\*\* 20ul-Größen enthalten 0.1% BSA

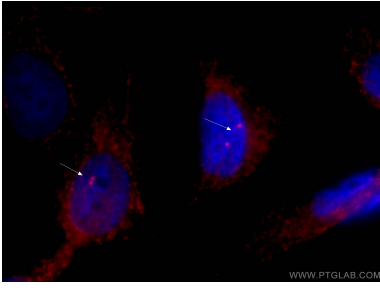
For technical support and original validation data for this product please contact:

T: 1 (888) 4PTGLAB (1-888-478-4522) (toll free in USA), or 1(312) 455-8498 (outside USA)

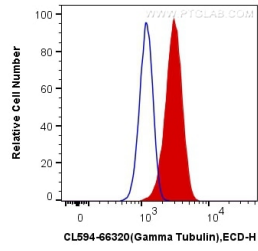
E: proteintech@ptglab.com  
W: ptglab.com

This product is exclusively available under Proteintech Group brand and is not available to purchase from any other manufacturer.

## Ausgewählte Validierungsdaten



Immunofluorescent analysis of (-20°C Ethanol) fixed MDCK cells using CL594-66320 (gamma tubulin antibody) at dilution of 1:50.



1X10<sup>6</sup> HeLa cells were intracellularly stained with 0.8 ug CoraLite®594 Anti-Human Gamma Tubulin (CL594-66320, Clone:3F9H8) (red), or 0.8 ug Mouse IgG2a Isotype Control (CL594-66360-2, Clone: K11A1B2A2) (blue). Cells were fixed with 4% PFA and permeabilized with Flow Cytometry Perm Buffer (PF00011-C).