

Nur für Forschungszwecke

# GP73/GOLPH2 Monoklonaler Antikörper

Katalog-Nr.:CL594-66331



## Allgemeine Informationen

<b>Katalog-Nr.:</b> CL594-66331	<b>GenBank-Zugangsnummer:</b> BC001740	<b>Reinigungsmethode:</b> Protein-G-Reinigung
<b>Größe:</b> 100ul , Konzentration: 1000 µg/ml von51280 Nanodrop;	<b>GeneID (NCBI):</b> 51280	<b>CloneNo.:</b> 3D1F1
<b>Wirt:</b> Maus	<b>Vollständiger Name:</b> golgi membrane protein 1	<b>Empfohlene Verdünnungen:</b> IF 1:50-1:500
<b>Isotyp:</b> IgG1	<b>Berechnete Masse:</b> 45 kDa	<b>Anregungs-/Emissionsmaxima-Wellenlängen:</b> 588 nm / 604 nm
<b>Immunogen Katalognummer:</b> AG7207		

## Anwendungen

<b>Geprüfte Anwendungen:</b> FC (Intra), IF	<b>Positivkontrollen:</b> IF : HepG2-Zellen, HeLa-Zellen
<b>Getestete Reaktivität:</b> Human	

## Hintergrundinformationen

Golgi phosphoprotein 2 (GOLPH2, also known as GP73 or GOLM1) is a resident Golgi type-II membrane protein. It is predominantly expressed in the epithelial cells of many human tissues. GOLPH2 traffics through endosomes and can be secreted into the circulation. Its expression is upregulated in a number of tumors and GOLPH2 could be a promising serum marker for hepatocellular carcinoma. We got 73 kDa in western blotting due to phosphorylation.

## Lagerung

**Lagerungsbedingungen:**  
Bei -20°C lagern. Vor Licht schützen. Nach dem Versand ein Jahr stabil.  
**Lagerungspuffer:**  
BS mit 50% Glycerin, 0,05% Proclin300, 0,5% BSA, pH 7,3.  
**Aliquotieren ist nicht notwendig bei -20°C Lagerung**

**\*\*\* 20ul-Größen enthalten 0.1% BSA**

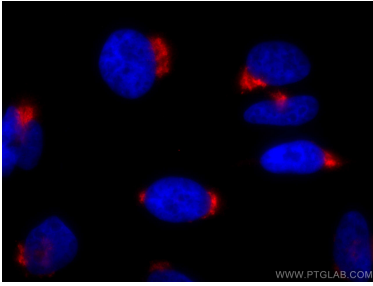
For technical support and original validation data for this product please contact:

T: 1 (888) 4PTGLAB (1-888-478-4522) (toll free in USA), or 1(312) 455-8498 (outside USA)

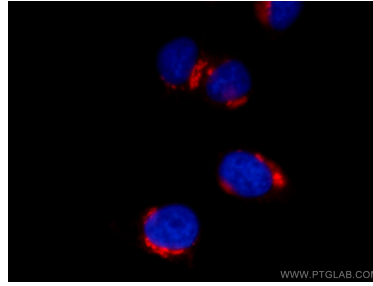
E: [proteintech@ptglab.com](mailto:proteintech@ptglab.com)  
W: [ptglab.com](http://ptglab.com)

**This product is exclusively available under Proteintech Group brand and is not available to purchase from any other manufacturer.**

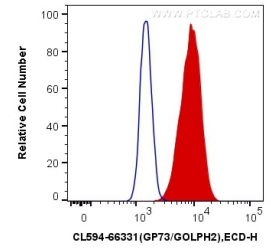
## Ausgewählte Validierungsdaten



Immunofluorescent analysis of (4% PFA) fixed HeLa cells using CoraLite®594 GP73/GOLPH2 antibody (CL594-66331, Clone: 3D1F1) at dilution of 1:200.



Immunofluorescent analysis of (4% PFA) fixed HepG2 cells using CL594-66331 (GP73/GOLPH2 antibody) at dilution of 1:100.



1X10<sup>6</sup> HeLa cells were intracellularly stained with 0.4 ug CoraLite®594 Anti-Human GP73/GOLPH2 (CL594-66331, Clone:3D1F1) (red), or 0.4 ug Mouse IgG1 Isotype Control (CL594-66360, Clone: T1F8D3F10) (blue). Cells were fixed with 4% PFA and permeabilized with Flow Cytometry Perm Buffer (PF00011-C).