

Nur für Forschungszwecke

# Annexin A1 Monoklonaler Antikörper

Katalog-Nr.:CL594-66344



## Allgemeine Informationen

<b>Katalog-Nr.:</b> CL594-66344	<b>GenBank-Zugangsnummer:</b> BC001275	<b>Reinigungsmethode:</b> Protein-G-Reinigung
<b>Größe:</b> 100ul , Konzentration: 1000 µg/ml von301 Nanodrop;	<b>GeneID (NCBI):</b> annexin A1	<b>CloneNo.:</b> 1E1B7
<b>Wirt:</b> Maus	<b>Vollständiger Name:</b> annexin A1	<b>Empfohlene Verdünnungen:</b> IF 1:50-1:500
<b>Isotyp:</b> IgG1	<b>Berechnete Masse:</b> 346 aa, 39 kDa	<b>Anregungs-/Emissionsmaxima- Wellenlängen:</b> 588 nm / 604 nm
<b>Immunogen Katalognummer:</b> AG17273	<b>Beobachtete Masse:</b> 35 kDa	

## Anwendungen

<b>Geprüfte Anwendungen:</b> FC (Intra), IF	<b>Positivkontrollen:</b> IF : A549-Zellen,
<b>Getestete Reaktivität:</b> Human, Maus	

## Hintergrundinformationen

ANXA1, also named as ANX1, LPC1 and p35, belongs to the annexin family. It is a member of the annexin family of Ca<sup>2+</sup>-binding and phospholipidbinding proteins, and it is particularly abundant in various populations of peripheral blood leukocytes. ANXA1 regulates phospholipase A2 activity. It seems to bind from two to four calcium ions with high affinity. ANXA1 is a pleiotrophic protein produced by many cell types including peripheral blood leucocytes.

## Lagerung

**Lagerungsbedingungen:**  
Bei -20°C lagern. Vor Licht schützen. Nach dem Versand ein Jahr stabil.  
**Lagerungspuffer:**  
BS mit 50% Glycerin, 0,05% Proclin300, 0,5% BSA, pH 7,3.  
Aliquotieren ist nicht notwendig bei -20°C Lagerung

\*\*\* 20ul-Größen enthalten 0.1% BSA

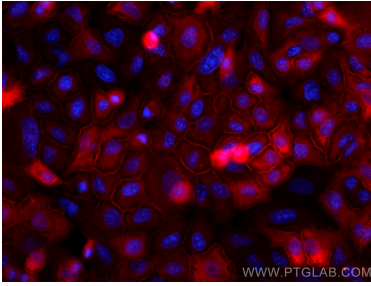
For technical support and original validation data for this product please contact:

T: 1 (888) 4PTGLAB (1-888-478-4522) (toll free  
in USA), or 1(312) 455-8498 (outside USA)

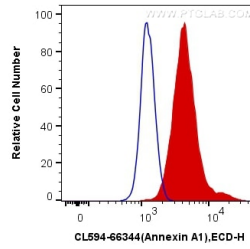
E: [proteintech@ptglab.com](mailto:proteintech@ptglab.com)  
W: [ptglab.com](http://ptglab.com)

This product is exclusively available under Proteintech Group brand and is not available to purchase from any other manufacturer.

## Ausgewählte Validierungsdaten



Immunofluorescent analysis of (-20°C Methanol) fixed A549 cells using Coralite®594 Annexin A1 antibody (CL594-66344, Clone: 1E1B7) at dilution of 1:200.



1X10<sup>6</sup> K-562 cells were intracellularly stained with 0.4 ug Coralite®594 Anti-Human Annexin A1 (CL594-66344, Clone:1E1B7) (red), or 0.4 ug Mouse IgG1 Isotype Control (CL594-66360, Clone: T1F8D3F10) (blue). Cells were fixed with 4% PFA and permeabilized with Flow Cytometry Perm Buffer (PF00011-C).