

Nur für Forschungszwecke

# IgG1 Isotype Control Monoklonaler Antikörper



Katalog-Nr.:CL594-66360-1

## Allgemeine Informationen

<b>Katalog-Nr.:</b> CL594-66360-1	<b>GenBank-Zugangsnummer:</b> GeneID (NCBI):	<b>Reinigungsmethode:</b> Protein-G-Reinigung
<b>Größe:</b> 100ug , Konzentration: 200 µg/ml von Nanodrop;	<b>Vollständiger Name:</b>	<b>CloneNo.:</b> 1F8D3
<b>Wirt:</b> Maus		<b>Anregungs-/Emissionsmaxima-Wellenlängen:</b> 588 nm / 604 nm
<b>Isotyp:</b> IgG1		

## Anwendungen

**Geprüfte Anwendungen:**  
FC

**Getestete Reaktivität:**  
Megathura Crenulata

## Hintergrundinformationen

This antibody is used as the isotype control of mouse IgG1 (Kappa). It can be used as the isotype control in Flow Cytometry, Immuno-Precipitation and other experiments. The immunogen of this antibody is Keyhole Limpet Hemocyanin (KLH).

## Lagerung

**Lagerungsbedingungen:**  
Store at 2-8°C. Avoid exposure to light. Stable for one year after shipment.

**Lagerungspuffer:**  
PBS with 0.09% sodium azide and 0.5% BSA.

**\*\*\* 20ul-Größen enthalten 0.1% BSA**

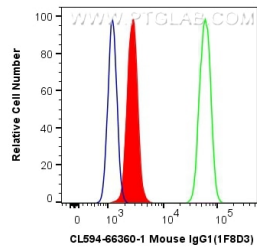
For technical support and original validation data for this product please contact:

T: 1 (888) 4PTGLAB (1-888-478-4522) (toll free in USA), or 1(312) 455-8498 (outside USA)

E: [proteintech@ptglab.com](mailto:proteintech@ptglab.com)  
W: [ptglab.com](http://ptglab.com)

**This product is exclusively available under Proteintech Group brand and is not available to purchase from any other manufacturer.**

## Ausgewählte Validierungsdaten



1X10<sup>6</sup> A431 cells were intracellularly stained with 0.4 ug CoraLite®594 Anti-Mouse IgG1 isotype control (CL594-66360-1, Clone:1F8D3) (red), or 0.4 ug CoraLite®594 Anti-Human FKBP8 (CL594-66690, Clone: 1C1G12) (green), or unstained (blue). Cells were fixed with 4% PFA and permeabilized with Flow Cytometry Perm Buffer (PF00011-C).