

Nur für Forschungszwecke

TUBB3-specific Monoklonaler Antikörper



Katalog-Nr.:CL594-66375

2 Publikationen

Allgemeine Informationen

Katalog-Nr.: CL594-66375	GenBank-Zugangsnummer: NM_001197181	Reinigungsmethode: Protein-G-Reinigung
Größe: 100ul , Konzentration: 1000 µg/ml von10381	GeneID (NCBI): 10381	CloneNo.: 1F8G10
Nanodrop;	Vollständiger Name: tubulin, beta 3	Empfohlene Verdünnungen: WB 1:1000-1:6000 IF 1:50-1:500
Wirt: Maus	Berechnete Masse: 55 kDa	Anregungs-/Emissionsmaxima-Wellenlängen: 588 nm / 604 nm
Isotyp: IgG1		

Anwendungen

Geprüfte Anwendungen: FC (Intra), IF, WB	Positivkontrollen: WB : Neuro-2a-Zellen, IF : Maushirngewebe,
In Publikationen genannte Anwendungen: IF, IHC	
Getestete Reaktivität: Human, Maus, Ratte	
Zitierte Arten: Maus	

Hintergrundinformationen

TUBB3, the class III β tubulin or Tuj1, is selectively expressed in testis and neurons of the central and peripheral nervous system. It has been widely used as a marker for neurons. Aberrant expression of TUBB3 has also been found in various tumors of non-neural origin and can be used as a biomarker for cancer aggressiveness and a marker for the tendency to respond poorly to chemotherapy. This antibody is specific to TUBB3 but not cross-react with other tubulin isoforms. And the antibody is conjugated with CL594, Ex/Em 593 nm/614 nm.

Bemerkenswerte Veröffentlichungen

Verfasser	Pubmed ID	Journal	Anwendung
Nao Iguchi	35332157	Sci Rep	IF
Yuki Shindo	35427599	Exp Cell Res	IHC

Lagerung

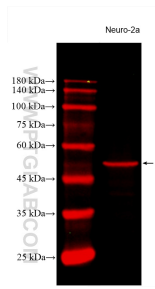
Lagerungsbedingungen:
Bei -20°C lagern. Vor Licht schützen. Nach dem Versand ein Jahr stabil.
Lagerungspuffer:
BS mit 50% Glycerin, 0,05% Proclin300, 0,5% BSA, pH 7,3.
Aliquotieren ist nicht notwendig bei -20°C Lagerung

*** 20ul-Größen enthalten 0.1% BSA

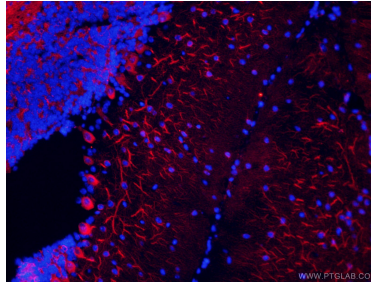
For technical support and original validation data for this product please contact:
T: 1 (888) 4PTGLAB (1-888-478-4522) (toll free in USA), or 1(312) 455-8498 (outside USA)
E: proteintech@ptglab.com
W: ptglab.com

This product is exclusively available under Proteintech Group brand and is not available to purchase from any other manufacturer.

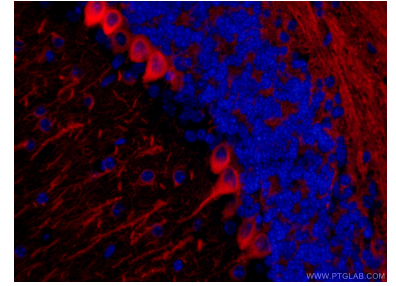
Ausgewählte Validierungsdaten



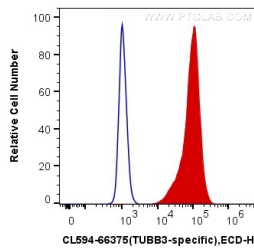
Neuro-2a lysates were subjected to SDS PAGE followed by western blot with CL594-66375 (TUBB3-specific antibody) at dilution of 1:3000 incubated at room temperature for 1.5 hours.



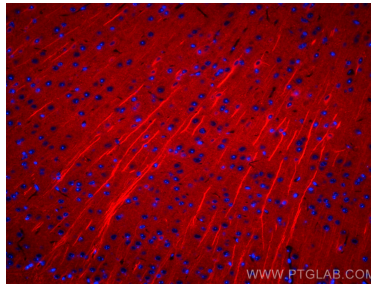
Immunofluorescent analysis of (4% PFA) fixed mouse brain tissue using CL594-66375 (TUBB3-specific antibody) at dilution of 1:50.



Immunofluorescent analysis of (4% PFA) fixed mouse brain tissue using CL594-66375 (TUBB3-specific antibody) at dilution of 1:50.



1X10⁶ SH-SY5Y cells were intracellularly stained with 0.4 ug Coralite®594 Anti-Human TUBB3-specific (CL594-66375, Clone:1F8G10) (red), or 0.4 ug Mouse IgG1 Isotype Control (CL594-66360, Clone: T1F8D3F10) (blue). Cells were fixed with 4% PFA and permeabilized with Flow Cytometry Perm Buffer (PF00011-C).



Immunofluorescent analysis of (4% PFA) fixed mouse brain tissue using Coralite®594 TUBB3-specific antibody (CL594-66375, Clone: 1F8G10) at dilution of 1:200.