

Nur für Forschungszwecke

Calsequestrin 2 Monoklonaler Antikörper



Katalog-Nr.:CL594-66419

Allgemeine Informationen

Katalog-Nr.: CL594-66419	GenBank-Zugangsnummer: BC022288	Reinigungsmethode: Protein-A-Reinigung
Größe: 100ul , Konzentration: 1000 µg/ml von845 Nanodrop;	GeneID (NCBI): 1C10A1	CloneNo.: 1C10A1
Wirt: Maus	Vollständiger Name: calsequestrin 2 (cardiac muscle)	Empfohlene Verdünnungen: IF 1:50-1:500
Isotyp: IgG2a	Berechnete Masse: 46 kDa	Anregungs-/Emissionsmaxima-Wellenlängen: 588 nm / 604 nm
Immunogen Katalognummer: AG13246	Beobachtete Masse: 50 kDa	

Anwendungen

Geprüfte Anwendungen: IF	Positivkontrollen: IF : Mausherzgewebe,
Getestete Reaktivität: Hausschwein, Human, Maus, Ratte	

Hintergrundinformationen

Calsequestrin (CASQ) is a Ca²⁺-binding protein present primarily in junctional sarcoplasmic reticulum of skeletal and cardiac muscle; the cardiac form (CASQ2) is encoded by a separate gene. The primary role of CASQ2 is buffering of the sarcoplasmic reticulum Ca²⁺ ions, but another role for CASQ2 has emerged recently: CASQ2 regulates the open probability of ryanodine receptor 2 (RyR2). Mutations in CASQ2 cause stress-induced polymorphic ventricular tachycardia, also referred to as catecholaminergic polymorphic ventricular tachycardia 2 (CPVT2), a disease characterized by bidirectional ventricular tachycardia that may lead to cardiac arrest.

Lagerung

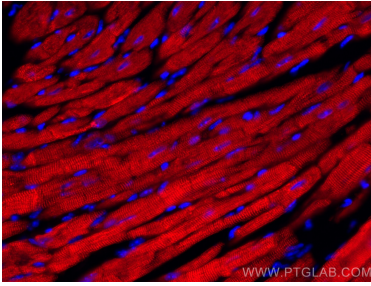
Lagerungsbedingungen:
Bei -20°C lagern. Vor Licht schützen.
Lagerungspuffer:
BS mit 50% Glycerin, 0,05% Proclin300, 0,5% BSA, pH 7,3.
Aliquotieren ist nicht notwendig bei -20°C Lagerung

***** 20ul-Größen enthalten 0.1% BSA**

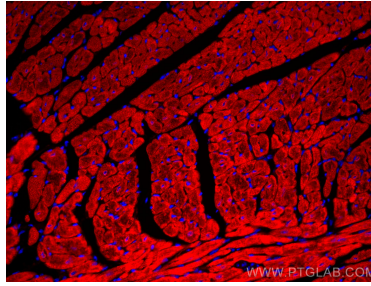
For technical support and original validation data for this product please contact:
T: 1 (888) 4PTGLAB (1-888-478-4522) (toll free in USA), or 1(312) 455-8498 (outside USA)
E: proteintech@ptglab.com
W: ptglab.com

This product is exclusively available under Proteintech Group brand and is not available to purchase from any other manufacturer.

Ausgewählte Validierungsdaten



Immunofluorescent analysis of (4% PFA) fixed mouse heart tissue using CoraLite®594 Calsequestrin 2 antibody (CL594-66419, Clone: 1C10A1) at dilution of 1:200.



Immunofluorescent analysis of (4% PFA) fixed mouse heart tissue using CoraLite®594 Calsequestrin 2 antibody (CL594-66419, Clone: 1C10A1) at dilution of 1:200.