

Nur für Forschungszwecke

COPS2 Monoklonaler Antikörper

Katalog-Nr.:CL594-66435



Allgemeine Informationen

| | | |
|---|---|---|
| Katalog-Nr.: CL594-66435 | GenBank-Zugangsnummer: BC012629 | Reinigungsmethode: Protein-G-Reinigung |
| Größe: 100ul , Konzentration: 1000 µg/ml von9318 Nanodrop; | GeneID (NCBI): 2H10E6 | CloneNo.: 2H10E6 |
| Wirt: Maus | Vollständiger Name: COP9 constitutive photomorphogenic homolog subunit 2 (Arabidopsis) | Empfohlene Verdünnungen: 1:50-1:500 |
| Isotyp: IgG1 | Berechnete Masse: 52 kDa | Anregungs-/Emissionsmaxima- Wellenlängen: 588 nm / 604 nm |
| Immunogen Katalognummer: AG1415 | Beobachtete Masse: 52 kDa | |

Anwendungen

| | |
|---|---|
| Geprüfte Anwendungen: IF | Positivkontrollen: IF : humane Ovarialkarzinomzellen, |
| Getestete Reaktivität: Human, Maus, Ratte | |

Hintergrundinformationen

COPS2 is an essential component of the COP9 signalosome complex (CSN), a complex involved in various cellular and developmental processes. The CSN complex is an essential regulator of the ubiquitin (Ubl) conjugation pathway by mediating the deneddylation of the cullin subunits of SCF-type E3 ligase complexes, leading to decrease the Ubl ligase activity of SCF-type complexes such as SCF, CSA or DDB2. The complex is also involved in phosphorylation of p53/TP53, c-jun/JUN, IκappaBα/NFKBIA, ITPK1 and IRF8/ICSBP, possibly via its association with CK2 and PKD kinases. CSN-dependent phosphorylation of TP53 and JUN promotes and protects degradation by the Ubl system, respectively.

Lagerung

Lagerungsbedingungen:
Bei -20°C lagern. Vor Licht schützen.
Lagerungspuffer:
BS mit 50% Glycerin, 0,05% Proclin300, 0,5% BSA, pH 7,3.
Aliquotieren ist nicht notwendig bei -20°C Lagerung

*** 20ul-Größen enthalten 0.1% BSA

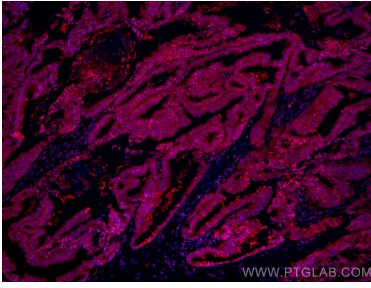
For technical support and original validation data for this product please contact:

T: 1 (888) 4PTGLAB (1-888-478-4522) (toll free
in USA), or 1(312) 455-8498 (outside USA)

E: proteintech@ptglab.com
W: ptglab.com

This product is exclusively available under Proteintech Group brand and is not available to purchase from any other manufacturer.

Ausgewählte Validierungsdaten



Immunofluorescent analysis of (4% PFA) fixed human ovary cancer cells using CoraLite®594 COPS2 antibody (CL594-66435, Clone: 2H10E6) at dilution of 1:200.