

Nur für Forschungszwecke

EGFR Monoklonaler Antikörper

Katalog-Nr.:CL594-66455

Vorgestelltes Produkt



Allgemeine Informationen

Katalog-Nr.: CL594-66455	GenBank-Zugangsnummer: BC094761	Reinigungsmethode: Protein-G-Reinigung
Größe: 100ul , Konzentration: 1000 µg/ml von1956 Nanodrop;	GeneID (NCBI): 1956	CloneNo.: 2A2H10
Wirt: Maus	Vollständiger Name: epidermal growth factor receptor (erythroblastic leukemia viral (v-erb- b) oncogene homolog, avian)	Anregungs-/Emissionsmaxima- Wellenlängen: 588 nm / 604 nm
Isotyp: IgG1	Berechnete Masse: 1210 aa, 134 kDa	
Immunogen Katalognummer: AG24947	Beobachtete Masse: 145-165 kDa	

Anwendungen

Geprüfte Anwendungen:
FC (Intra)

Getestete Reaktivität:
Human

Hintergrundinformationen

EGFR, also named as ERBB1, is a cell-surface receptor for members of the epidermal growth factor family (EGF-family) of extracellular protein ligands. Binding of the protein to a ligand induces receptor dimerization and tyrosine autophosphorylation and leads to cell proliferation. The gene resides on chromosome 7p12, encoding a 170 kDa membrane-associated glycoprotein. Recent studies have shown EGFR plays a critical role in cancer development and progression, including cell proliferation, apoptosis, angiogenesis, and metastatic spread. Mutations in this gene are associated with lung cancer.

Lagerung

Lagerungsbedingungen:
Bei -20°C lagern. Vor Licht schützen. Nach dem Versand ein Jahr stabil.

Lagerungspuffer:
BS mit 50% Glycerin, 0,05% Proclin300, 0,5% BSA, pH 7,3.

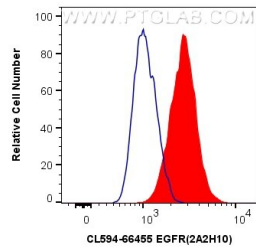
Aliquotieren ist nicht notwendig bei -20°C Lagerung

*** 20ul-Größen enthalten 0.1% BSA

For technical support and original validation data for this product please contact:
T: 1 (888) 4PTGLAB (1-888-478-4522) (toll free in USA), or 1(312) 455-8498 (outside USA)
E: proteintech@ptglab.com
W: ptglab.com

This product is exclusively available under Proteintech Group brand and is not available to purchase from any other manufacturer.

Ausgewählte Validierungsdaten



1X10⁶ A431 cells were intracellularly stained with 0.4 ug CoraLite®594 Anti-Human EGFR (CL594-66455, Clone:2A2H10) (red), or 0.4 ug Control Antibody. Cells were fixed with 4% PFA and permeabilized with Flow Cytometry Perm Buffer (PF00011-C).