

Nur für Forschungszwecke

SLP76 Monoklonaler Antikörper

Katalog-Nr.:CL594-66465



Allgemeine Informationen

| | | |
|---|---|--|
| Katalog-Nr.: CL594-66465 | GenBank-Zugangsnummer: BC016618 | Reinigungsmethode: Protein-G-Reinigung |
| Größe: 100ul , Konzentration: 1000 µg/ml von3937 Nanodrop; | GeneID (NCBI): 4H10B1 | CloneNo.: 4H10B1 |
| Wirt: Maus | Vollständiger Name: lymphocyte cytosolic protein 2 (SH2 domain containing leukocyte protein of 76kDa) | Empfohlene Verdünnungen: IF 1:50-1:500 |
| Isotyp: IgG1 | Berechnete Masse: 533 aa, 60 kDa | Anregungs-/Emissionsmaxima-Wellenlängen: 588 nm / 604 nm |
| Immunogen Katalognummer: AG3432 | | |

Anwendungen

| | |
|--|--|
| Geprüfte Anwendungen: FC (Intra), IF | Positivkontrollen: IF : HeLa-Zellen, |
| Getestete Reaktivität: Human | |

Hintergrundinformationen

LCP2, also named as SLP76, is an adapter protein that acts as a substrate of the T cell antigen receptor (TCR)-activated protein tyrosine kinase pathway. It contains an N-terminal leucine Zip motif, a tyrosine-rich domain, a proline-rich domain and a C-terminal SH2 domain. It is constitutively associated with the growth factor receptor-bound protein 2 (Grb2)-related adapter protein 2 (Grap2, a.k.a. GADS) through the interaction of its proline residues with one of the SH3 domains of Grap2. SLP76 associates with growth factor receptor bound protein 2 (Grap2), and is thought to play a role TCR-mediated intracellular signal transduction. SLP76 is also expressed by mast cells, and mast cell activation was markedly impaired in SLP76-deficient mice.

Lagerung

Lagerungsbedingungen:
Bei -20°C lagern. Vor Licht schützen. Nach dem Versand ein Jahr stabil.
Lagerungspuffer:
BS mit 50% Glycerin, 0,05% Proclin300, 0,5% BSA, pH 7,3.
Aliquotieren ist nicht notwendig bei -20°C Lagerung

***** 20ul-Größen enthalten 0.1% BSA**

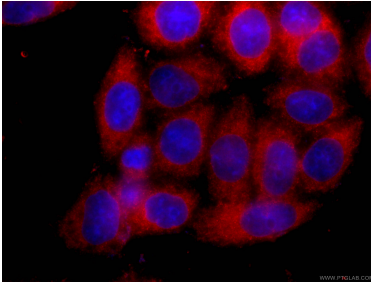
For technical support and original validation data for this product please contact:

T: 1 (888) 4PTGLAB (1-888-478-4522) (toll free in USA), or 1(312) 455-8498 (outside USA)

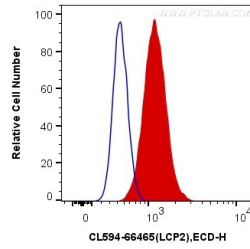
E: proteintech@ptglab.com
W: ptglab.com

This product is exclusively available under Proteintech Group brand and is not available to purchase from any other manufacturer.

Ausgewählte Validierungsdaten



Immunofluorescent analysis of (-20°C Ethanol) fixed HeLa cells using CL594-66465 (SLP76 antibody) at dilution of 1:100.



1X10⁶ Jurkat cells were intracellularly stained with 0.4 ug CoraLite®594 Anti-Human SLP76 (CL594-66465, Clone:4H10B1) (red), or 0.4 ug Mouse IgG1 Isotype Control (CL594-66360, Clone: T1F8D3F10) (blue). Cells were fixed with 4% PFA and permeabilized with Flow Cytometry Perm Buffer (PF00011-C).