

Nur für Forschungszwecke

SOD2 Monoklonaler Antikörper

Katalog-Nr.:CL594-66474



Allgemeine Informationen

Katalog-Nr.: CL594-66474	GenBank-Zugangsnummer: BC016934	Reinigungsmethode: Protein-A-Reinigung
Größe: 100ul , Konzentration: 1000 µg/ml von6648 Nanodrop;	GeneID (NCBI): superoxide dismutase 2, mitochondrial	CloneNo.: 3A6C2
Wirt: Maus	Vollständiger Name: superoxide dismutase 2, mitochondrial	Empfohlene Verdünnungen: IF 1:50-1:500
Isotyp: IgG2a	Berechnete Masse: 25 kDa	Anregungs-/Emissionsmaxima- Wellenlängen: 588 nm / 604 nm
Immunogen Katalognummer: AG21388	Beobachtete Masse: 25 kDa	

Anwendungen

Geprüfte Anwendungen: FC (Intra), IF	Positivkontrollen: IF : HUVEC-Zellen,
Getestete Reaktivität: Hausschwein, Human, Maus, Ratte	

Hintergrundinformationen

SOD2(superoxide dismutase 2, mitochondrial) is also named as IPOB, MNSOD, SODM, Mn-SOD and belongs to the iron/manganese superoxide dismutase family. It is a marker of mitochondria, which is restricted to the perinuclear area in a cell with aggregate formation of mutant SOD1(PMID:12659845). It functions as the first line of antioxidant defense against highly reactive superoxide radicals and it appears to be early predictors for survival in septic patients with with MIF(PMID:20863520). It has 2 isoforms with the molecular weight of 25 kDa and 21 kDa.

Lagerung

Lagerungsbedingungen:
Bei -20°C lagern. Vor Licht schützen. Nach dem Versand ein Jahr stabil.
Lagerungspuffer:
BS mit 50% Glycerin, 0,05% Proclin300, 0,5% BSA, pH 7,3.
Aliquotieren ist nicht notwendig bei -20°C Lagerung

***** 20ul-Größen enthalten 0.1% BSA**

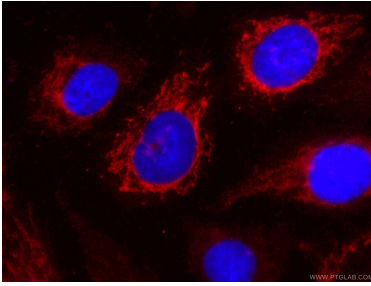
For technical support and original validation data for this product please contact:

T: 1 (888) 4PTGLAB (1-888-478-4522) (toll free
in USA), or 1(312) 455-8498 (outside USA)

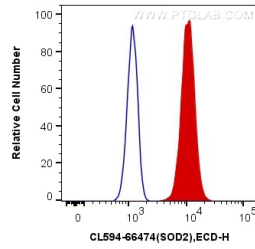
E: proteintech@ptglab.com
W: ptglab.com

This product is exclusively available under Proteintech Group brand and is not available to purchase from any other manufacturer.

Ausgewählte Validierungsdaten



Immunofluorescent analysis of (-20°C Ethanol) fixed HUVEC cells using CL594-66474 (SOD2 antibody) at dilution of 1:100.



1X10⁶ HeLa cells were intracellularly stained with 0.5 ug CoraLite®594 Anti-Human SOD2 (CL594-66474, Clone:3A6C2) (red), or 0.5 ug Control Antibody. Cells were fixed with 4% PFA and permeabilized with Flow Cytometry Perm Buffer (PF00011-C).