

Nur für Forschungszwecke

PYCR1 Monoklonaler Antikörper

Katalog-Nr.:CL594-66510



Allgemeine Informationen

Katalog-Nr.: CL594-66510	GenBank-Zugangsnummer: BC022244	Reinigungsmethode: Protein-A-Reinigung
Größe: 100ul , Konzentration: 1000 µg/ml von	GeneID (NCBI): 5831	CloneNo.: 1H2G1
Nanodrop;	Vollständiger Name: pyrroline-5-carboxylate reductase 1	Empfohlene Verdünnungen: IF 1:50-1:500
Wirt: Maus	Berechnete Masse: 319 aa, 33.8 kDa	Anregungs-/Emissionsmaxima-Wellenlängen: 588 nm / 604 nm
Isotyp: IgG2a	Beobachtete Masse: 33 kDa, 35 kDa	
Immunogen Katalognummer: AG17919		

Anwendungen

Geprüfte Anwendungen: FC (Intra), IF	Positivkontrollen: IF : HeLa-Zellen,
Getestete Reaktivität: Human, Maus, Ratte	

Hintergrundinformationen

PYCR1, also named as P5CR1, belongs to the pyrroline-5-carboxylate reductase family. It is a housekeeping enzyme that catalyzes the last step in proline biosynthesis. PYCR1 can utilize both NAD and NADP, but has higher affinity for NAD. It is involved in the cellular response to oxidative stress. Mutation in PYCR1 will cause ARCL type II (ARCL2B). Some mutation will cause DeBary syndrome (DBS) which is characterized by progeroid features, ophthalmological abnormalities, intrauterine growth retardation, and cutis laxa.

Lagerung

Lagerungsbedingungen:
Bei -20°C lagern. Vor Licht schützen. Nach dem Versand ein Jahr stabil.
Lagerungspuffer:
BS mit 50% Glycerin, 0,05% Proclin300, 0,5% BSA, pH 7,3.
Aliquotieren ist nicht notwendig bei -20°C Lagerung

***** 20ul-Größen enthalten 0.1% BSA**

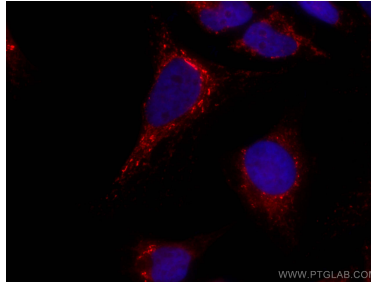
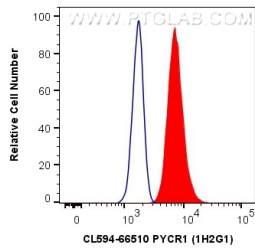
For technical support and original validation data for this product please contact:

T: 1 (888) 4PTGLAB (1-888-478-4522) (toll free in USA), or 1(312) 455-8498 (outside USA)

E: proteintech@ptglab.com
W: ptglab.com

This product is exclusively available under Proteintech Group brand and is not available to purchase from any other manufacturer.

Ausgewählte Validierungsdaten



1X10⁶ HeLa cells were intracellularly stained with 0.4 ug CoraLite@594 Anti-Human PYCR1 (CL594-66510, Clone:1H2G1) (red), or 0.4 ug Isotype Control. Cells were fixed with 4% PFA and permeabilized with Flow Cytometry Perm Buffer (PF00011-C).

Immunofluorescent analysis of (4% PFA) fixed HeLa cells using CoraLite@594 PYCR1 antibody (CL594-66510, Clone: 1H2G1) at dilution of 1:200.