

Nur für Forschungszwecke

# HLA-E Monoklonaler Antikörper

Katalog-Nr.:CL594-66530



## Allgemeine Informationen

<b>Katalog-Nr.:</b> CL594-66530	<b>GenBank-Zugangsnummer:</b> BC002578	<b>Reinigungsmethode:</b> Protein-A-Reinigung
<b>Größe:</b> 100ul , Konzentration: 1000 µg/ml von3133 Nanodrop;	<b>GeneID (NCBI):</b> 1A4G3	<b>CloneNo.:</b> 1A4G3
<b>Wirt:</b> Maus	<b>Vollständiger Name:</b> major histocompatibility complex, class I, E	<b>Empfohlene Verdünnungen:</b> IF 1:50-1:500
<b>Isotyp:</b> IgG2a	<b>Berechnete Masse:</b> 40 kDa	<b>Anregungs-/Emissionsmaxima- Wellenlängen:</b> 588 nm / 604 nm
<b>Immunogen Katalognummer:</b> AG6724		

## Anwendungen

<b>Geprüfte Anwendungen:</b> IF	<b>Positivkontrollen:</b> IF : humanes Tonsillitisgewebe,
<b>Getestete Reaktivität:</b> Human	

## Hintergrundinformationen

Human major histocompatibility complex (MHC) antigens, also referred to as human leukocyte antigens (HLA), are encoded by genes located on the short arm of chromosome 6 (6p21.3). There are two classes of HLA antigens: class I and class II. This class I molecules are membrane glycoproteins composed of a heavy (alpha) chain which is encoded by a HLA class I gene, and  $\beta$ 2-microglobulin light (beta) chain. The most extensively characterized members of the HLA class I gene family are the genes encoding the major transplantation antigens, HLA-A, B and C. HLA-E is a non-classical MHC class I molecule. HLA-E is frequently overexpressed in tumor diseases, transplants and virus-infected cells and represents an immunomodulatory molecule by binding to the receptors CD94/NKG2A, -B and -C on NK and T cells. Due to its immune suppressive features HLA-E expression might represent an important mechanism of tumors to escape immune surveillance.(PMID: 667938; 3375250; 2249951; 27589686)

## Lagerung

**Lagerungsbedingungen:**  
Bei -20°C lagern. Vor Licht schützen. Nach dem Versand ein Jahr stabil.  
**Lagerungspuffer:**  
BS mit 50% Glycerin, 0,05% Proclin300, 0,5% BSA, pH 7,3.  
Aliquotieren ist nicht notwendig bei -20°C Lagerung

\*\*\* 20ul-Größen enthalten 0.1% BSA

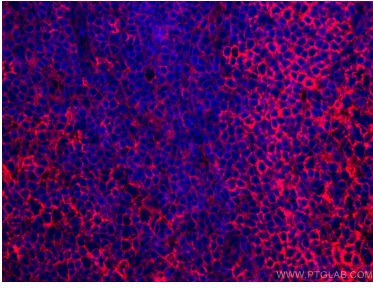
For technical support and original validation data for this product please contact:

T: 1 (888) 4PTGLAB (1-888-478-4522) (toll free  
in USA), or 1(312) 455-8498 (outside USA)

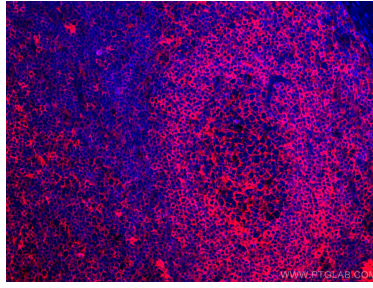
E: proteintech@ptglab.com  
W: ptglab.com

This product is exclusively available under Proteintech Group brand and is not available to purchase from any other manufacturer.

## Ausgewählte Validierungsdaten



Immunofluorescent analysis of (4% PFA) fixed human tonsillitis tissue using the CoraLite®594-conjugated version of this antibody, CL594-66530 (HLA-E antibody), at dilution of 1:100.



Immunofluorescent analysis of (4% PFA) fixed human tonsillitis tissue using the CoraLite®594-conjugated version of this antibody, CL594-66530 (HLA-E antibody), at dilution of 1:100.