

Nur für Forschungszwecke

RIC8A Monoklonaler Antikörper

Katalog-Nr.:CL594-66625



Allgemeine Informationen

Katalog-Nr.: CL594-66625	GenBank-Zugangsnummer: BC011821	Reinigungsmethode: Protein-G-Reinigung
Größe: 100ul, Konzentration: 1000 µg/ml von60626	GeneID (NCBI): 60626	CloneNo.: 1E3B11
Nanodrop;	Vollständiger Name: resistance to inhibitors of cholinesterase 8 homolog A (C. elegans)	Empfohlene Verdünnungen: IF 1:50-1:500
Wirt: Maus	Berechnete Masse: 60 kDa	Anregungs-/Emissionsmaxima- Wellenlängen: 588 nm / 604 nm
Isotyp: IgG1	Beobachtete Masse: 65 kDa	
Immunogen Katalognummer: AG1593		

Anwendungen

Geprüfte Anwendungen: IF	Positivkontrollen: IF : Maushirngewebe,
Getestete Reaktivität: Human, Maus, Ratte	

Hintergrundinformationen

RIC8A, also named as synembryn-A, is a Guanine nucleotide exchange factor (GEF), which can activate some, but not all, G-alpha proteins by exchanging bound GDP for free GTP. It is involved in regulation of microtubule pulling forces during mitotic movement of chromosomes by stimulating G(i)-alpha protein, possibly leading to release G(i)-alpha-GTP and NuMA proteins from the NuMA-GPSM2-G(i)-alpha-GDP complex. RIC8A also acts as an activator for G(q)-alpha (GNAQ) protein by enhancing the G(q)-coupled receptor-mediated ERK activation.

Lagerung

Lagerungsbedingungen:
Bei -20°C lagern. Vor Licht schützen.
Lagerungspuffer:
BS mit 50% Glycerin, 0,05% Proclin300, 0,5% BSA, pH 7,3.
Aliquotieren ist nicht notwendig bei -20°C Lagerung

***** 20ul-Größen enthalten 0.1% BSA**

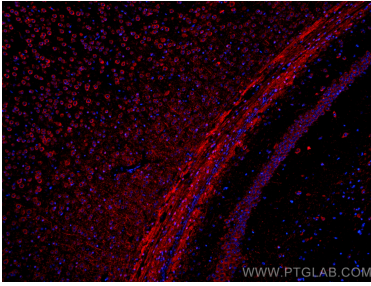
For technical support and original validation data for this product please contact:

T: 1 (888) 4PTGLAB (1-888-478-4522) (toll free
in USA), or 1(312) 455-8498 (outside USA)

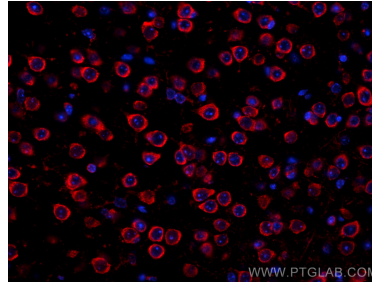
E: proteintech@ptglab.com
W: ptglab.com

This product is exclusively available under Proteintech Group brand and is not available to purchase from any other manufacturer.

Ausgewählte Validierungsdaten



Immunofluorescent analysis of (4% PFA) fixed mouse brain tissue using CoraLite®594 RIC8A antibody (CL594-66625, Clone: 1E3B11) at dilution of 1:200.



Immunofluorescent analysis of (4% PFA) fixed mouse brain tissue using CoraLite®594 RIC8A antibody (CL594-66625, Clone: 1E3B11) at dilution of 1:200.