

Nur für Forschungszwecke

GORASP2 Monoklonaler Antikörper

Katalog-Nr.:CL594-66627



Allgemeine Informationen

Katalog-Nr.: CL594-66627	GenBank-Zugangsnummer: BC007770	Reinigungsmethode: Protein-A-Reinigung
Größe: 100ul, Konzentration: 1000 µg/ml von26003	GeneID (NCBI): von26003	CloneNo.: 1C9A3
Nanodrop;	Vollständiger Name: golgi reassembly stacking protein 2,	Anregungs-/Emissionsmaxima-Wellenlängen: 588 nm / 604 nm
Wirt: Maus	Berechnete Masse: 55 kDa	
Isotyp: IgG1	Beobachtete Masse: 59 kDa	
Immunogen Katalognummer: AG17607		

Anwendungen

Geprüfte Anwendungen:
FC (Intra)

Getestete Reaktivität:
Hausschwein, Human, Ratte

Hintergrundinformationen

GORASP2 (Golgi reassembly-stacking protein 2, or GRS2) has multiple phosphorylation sites and can be phosphorylated by MKK/ERK pathway during mitosis. GORASP2 plays a role in the assembly and membrane stacking of the Golgi cisternae, and in the process by which Golgi stacks reform after mitotic breakdown. GORASP2 is supposed to regulate the intracellular transport and presentation of a defined set of transmembrane proteins, such as transmembrane TGFA.

Lagerung

Lagerungsbedingungen:
Bei -20°C lagern. Vor Licht schützen. Nach dem Versand ein Jahr stabil.

Lagerungspuffer:
BS mit 50% Glycerin, 0,05% Proclin300, 0,5% BSA, pH 7,3.

Aliquotieren ist nicht notwendig bei -20°C Lagerung

***** 20ul-Größen enthalten 0.1% BSA**

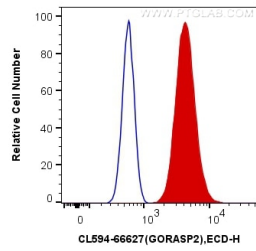
For technical support and original validation data for this product please contact:

T: 1 (888) 4PTGLAB (1-888-478-4522) (toll free in USA), or 1(312) 455-8498 (outside USA)

E: proteintech@ptglab.com
W: ptglab.com

This product is exclusively available under Proteintech Group brand and is not available to purchase from any other manufacturer.

Ausgewählte Validierungsdaten



1X10⁶ HepG2 cells were intracellularly stained with 0.4 ug CoraLite®594 Anti-Human GORASP2 (CL594-66627, Clone:1C9A3) (red), or 0.4 ug Control Antibody. Cells were fixed with 4% PFA and permeabilized with Intracellular Staining Permeabilization Wash Buffer.