

Nur für Forschungszwecke

PSMA/GCPII Monoklonaler Antikörper



Katalog-Nr.:CL594-66678

Allgemeine Informationen

Katalog-Nr.: CL594-66678	GenBank-Zugangsnummer: BC025672	Reinigungsmethode: Protein-G-Reinigung
Größe: 100ul , Konzentration: 1000 µg/ml von2346 Nanodrop;	GeneID (NCBI): Vollständiger Name: folate hydrolase (prostate-specific membrane antigen) 1	CloneNo.: 3G4E12
Wirt: Maus	Berechnete Masse: 719 aa, 81 kDa	Empfohlene Verdünnungen: IF 1:50-1:500
Isotyp: IgG1	Beobachtete Masse: 100-120 kDa	Anregungs-/Emissionsmaxima- Wellenlängen: 588 nm / 604 nm
Immunogen Katalognummer: AG16594		

Anwendungen

Geprüfte Anwendungen: FC (Intra), IF	Positivkontrollen: IF : humanes Prostatakarzinomgewebe,
Getestete Reaktivität: Human, Ratte	

Hintergrundinformationen

PSMA(Prostate-specific membrane antigen) is also named as FOLH1, FOLH, NAALAD1, PSM and belongs to the peptidase M28 family. PSMA is a 100-120 kDa integral transmembrane glycoprotein, considered to be a highly specific marker of the prostate gland, and has successfully been used as a marker of circulating prostatic epithelial cells(PMID:10074909; 15680901). It is involved in conversion of the major neurotransmitter (NAAG) to NAA and free glutamate. It has 8 isoforms produced by alternative splicing.

Lagerung

Lagerungsbedingungen:
Bei -20°C lagern. Vor Licht schützen. Nach dem Versand ein Jahr stabil.
Lagerungspuffer:
BS mit 50% Glycerin, 0,05% Proclin300, 0,5% BSA, pH 7,3.
Aliquotieren ist nicht notwendig bei -20°C Lagerung

*** 20ul-Größen enthalten 0.1% BSA

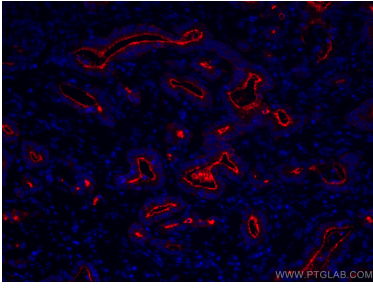
For technical support and original validation data for this product please contact:

T: 1 (888) 4PTGLAB (1-888-478-4522) (toll free
in USA), or 1(312) 455-8498 (outside USA)

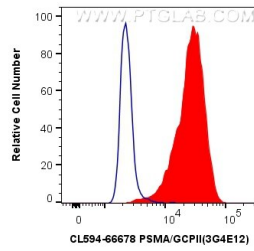
E: proteintech@ptglab.com
W: ptglab.com

This product is exclusively available under Proteintech Group brand and is not available to purchase from any other manufacturer.

Ausgewählte Validierungsdaten



Immunofluorescent analysis of (4% PFA) fixed human prostate cancer tissue using CoraLite®594 PSMA/GCPII antibody (CL594-66678, Clone: 3G4E12) at dilution of 1:200.



1X10⁶ LNCaP cells were intracellularly stained with 0.4 ug CoraLite®594 Anti-Human PSMA/GCPII (CL594-66678, Clone:3G4E12) (red), or 0.4 ug Control Antibody. Cells were fixed with 4% PFA and permeabilized with Flow Cytometry Perm Buffer (PF00011-C).