

Nur für Forschungszwecke

Cytokeratin 5 Monoklonaler Antikörper

Katalog-Nr.:CL594-66727



Allgemeine Informationen

Katalog-Nr.: CL594-66727	GenBank-Zugangsnummer: BC024292	Reinigungsmethode: Protein-G-Reinigung
Größe: 100ul , Konzentration: 1000 µg/ml von3852 Nanodrop;	GeneID (NCBI): 3852	CloneNo.: 1A1C5
Wirt: Maus	Vollständiger Name: keratin 5	Empfohlene Verdünnungen: IF 1:50-1:500
Isotyp: IgG1	Berechnete Masse: 590 aa, 62 kDa	Anregungs-/Emissionsmaxima-Wellenlängen: 588 nm / 604 nm
Immunogen Katalognummer: AG24184		

Anwendungen

Geprüfte Anwendungen: IF	Positivkontrollen: IF : humanes Ösophaguskarzinomgewebe,
Getestete Reaktivität: Hausschwein, Human, Maus	

Hintergrundinformationen

Keratins are a large family of proteins that form the intermediate filament cytoskeleton of epithelial cells. Keratin expression is highly regulated, tissue specific, and varies according to cell-state. Type I keratins consist of acidic, low molecular weight proteins with MW ranging from 40 kDa (KRT19) to 64 kDa (KRT9). Type 2 keratins consist of basic or neutral, high molecular weight proteins with MW from 52 kDa (KRT8) to 67 kDa (KRT18). Keratin 5, one 58-kD type II keratin, is coexpressed with a 50-kD keratin 14 in stratified squamous epithelia. Keratin 5, one 58-kD type II keratin, is coexpressed with a 50-kD tyK14 in stratified squamous epithelia.

Lagerung

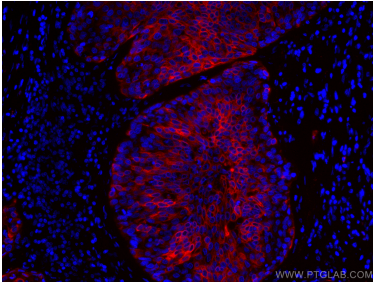
Lagerungsbedingungen:
Bei -20°C lagern. Vor Licht schützen.
Lagerungspuffer:
BS mit 50% Glycerin, 0,05% Proclin300, 0,5% BSA, pH 7,3.
Aliquotieren ist nicht notwendig bei -20°C Lagerung

***** 20ul-Größen enthalten 0.1% BSA**

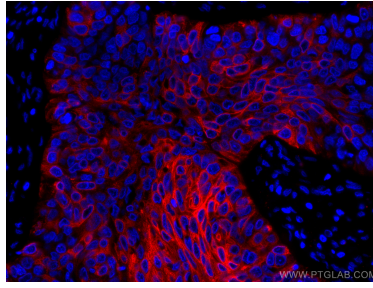
For technical support and original validation data for this product please contact:
T: 1 (888) 4PTGLAB (1-888-478-4522) (toll free in USA), or 1(312) 455-8498 (outside USA)
E: proteintech@ptglab.com
W: ptglab.com

This product is exclusively available under Proteintech Group brand and is not available to purchase from any other manufacturer.

Ausgewählte Validierungsdaten



Immunofluorescent analysis of (4% PFA) fixed human oesophagus cancer tissue using CoraLite®594 Cytokeratin 5 antibody (CL594-66727, Clone: 1A1C5) at dilution of 1:200.



Immunofluorescent analysis of (4% PFA) fixed human oesophagus cancer tissue using CoraLite®594 Cytokeratin 5 antibody (CL594-66727, Clone: 1A1C5) at dilution of 1:200.