

Allgemeine Informationen

Katalog-Nr.: CL594-66759	GenBank-Zugangsnummer: BC001114	Reinigungsmethode: Protein-G-Reinigung
Größe: 100ul , Konzentration: 1000 µg/ml von5696 Nanodrop;	GeneID (NCBI): 5696	CloneNo.: 2A5B6
Wirt: Maus	Vollständiger Name: proteasome (prosome, macropain) subunit, beta type, 8 (large multifunctional peptidase 7)	Empfohlene Verdünnungen: IF 1:50-1:500
Isotyp: IgG1	Berechnete Masse: 30 kDa	Anregungs-/Emissionsmaxima- Wellenlängen: 588 nm / 604 nm
Immunogen Katalognummer: AG6780	Beobachtete Masse: 23 kDa	

Anwendungen

Geprüfte Anwendungen: FC (Intra), IF	Positivkontrollen: IF : C2C12-Zellen, HeLa-Zellen, humanes Leberkarzinomgewebe
Getestete Reaktivität: Human, Ratte	

Hintergrundinformationen

PSMB8(Proteasome subunit beta type-8) is also named as LMP7, PSMB5i, RING10, Y2 and belongs to the peptidase T1B family. The gene encodes the chymotrypsin-like catalytic subunit of the immunoproteasome(PMID: 19525961). PSMB8 has a role in controlling pathogenic immune responses and may be a target in autoimmune disorders. Its prosequence is not essential for incorporation of PSMB8 into the maturing proteasome, but it increased the efficiency of PSMB8 incorporation and proteasome maturation(PMID: 10926487). The pro-PSMB8 is a 276aa protein with the molecular mass of 30 kDa, and the mature form is about 23kDa due to the 72aa propeptide cleaved. Defects in PSMB8 are the cause of Nakajo syndrome (NKJO).

Lagerung

Lagerungsbedingungen:
Bei -20°C lagern. Vor Licht schützen. Nach dem Versand ein Jahr stabil.
Lagerungspuffer:
BS mit 50% Glycerin, 0,05% Proclin300, 0,5% BSA, pH 7,3.
Aliquotieren ist nicht notwendig bei -20°C Lagerung

***** 20ul-Größen enthalten 0.1% BSA**

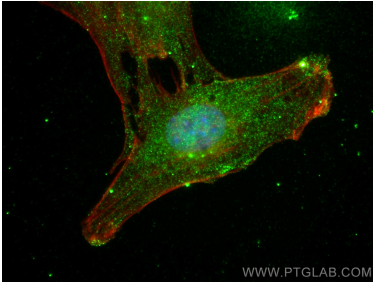
For technical support and original validation data for this product please contact:

T: 1 (888) 4PTGLAB (1-888-478-4522) (toll free
in USA), or 1(312) 455-8498 (outside USA)

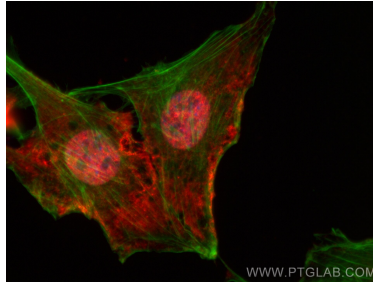
E: proteintech@ptglab.com
W: ptglab.com

This product is exclusively available under Proteintech Group brand and is not available to purchase from any other manufacturer.

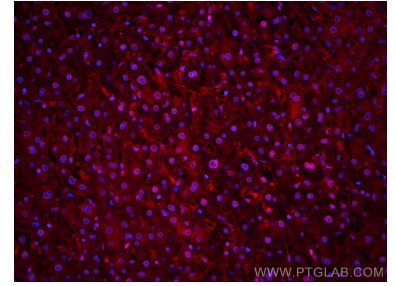
Ausgewählte Validierungsdaten



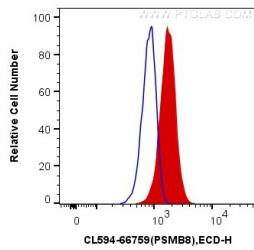
N/A



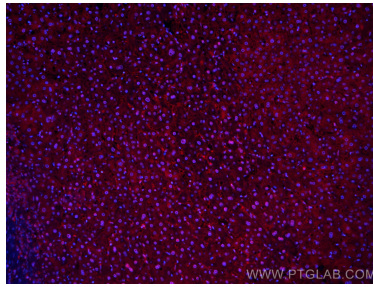
Immunofluorescent analysis of (4% PFA) fixed C2C12 cells using CoraLite®594 PSMB8 antibody (CL594-66759, Clone: 2A5B6) at dilution of 1:200, CL488-phalloidin (blue).



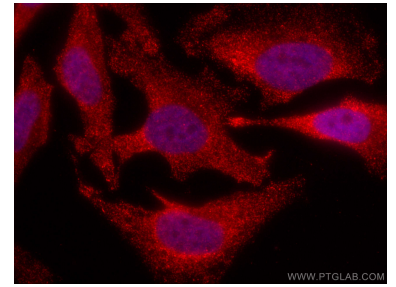
Immunofluorescent analysis of (4% PFA) fixed human liver cancer tissue using CoraLite®594 PSMB8 antibody (CL594-66759, Clone: 2A5B6) at dilution of 1:200.



1x10⁶ HeLa cells were intracellularly stained with 0.4 ug CoraLite®594 Anti-Human PSMB8 (CL594-66759, Clone:2A5B6) (red), or 0.4 ug Control Antibody. Cells were fixed and permeabilized with Transcription Factor Staining Buffer Kit (PF00011).



Immunofluorescent analysis of (4% PFA) fixed human liver cancer tissue using CoraLite®594 PSMB8 antibody (CL594-66759, Clone: 2A5B6) at dilution of 1:200.



Immunofluorescent analysis of (4% PFA) fixed HeLa cells using CoraLite®594 PSMB8 antibody (CL594-66759, Clone: 2A5B6) at dilution of 1:200.