

Nur für Forschungszwecke

HSP27 Monoklonaler Antikörper

Katalog-Nr.:CL594-66767



Allgemeine Informationen

Katalog-Nr.: CL594-66767	GenBank-Zugangsnummer: BC012768	Reinigungsmethode: Protein-G-Reinigung
Größe: 100ul , Konzentration: 1000 µg/ml von3315 Nanodrop;	GeneID (NCBI): heat shock 27kDa protein 1	CloneNo.: 3E7A1
Wirt: Maus	Vollständiger Name: heat shock 27kDa protein 1	Empfohlene Verdünnungen: IF 1:50-1:500
Isotyp: IgG1	Berechnete Masse: 19-23 kDa	Anregungs-/Emissionsmaxima- Wellenlängen: 588 nm / 604 nm
Immunogen Katalognummer: AG27859	Beobachtete Masse: 27 kDa	

Anwendungen

Geprüfte Anwendungen: IF	Positivkontrollen: IF : MCF-7-Zellen,
Getestete Reaktivität: Human	

Hintergrundinformationen

HSPB1, also known as heat shock protein 27 (Hsp27), belongs to the small heat shock protein family which is induced in response to environmental challenges or/and developmental transitions. It is also an anti-apoptotic protein that plays crucial roles in tumorigenesis and cell survival and is reported to be an independent prognosis marker for cancer. Recently HSPB1 has been found to be a valuable marker for melanoma. In addition to the predicted 27 kDa, an extra 50-55 kDa representing dimeric form of HSPB1 may also be observed (21353161).

Lagerung

Lagerungsbedingungen:
Bei -20°C lagern. Vor Licht schützen.
Lagerungspuffer:
BS mit 50% Glycerin, 0,05% Proclin300, 0,5% BSA, pH 7,3.
Aliquotieren ist nicht notwendig bei -20°C Lagerung

*** 20ul-Größen enthalten 0.1% BSA

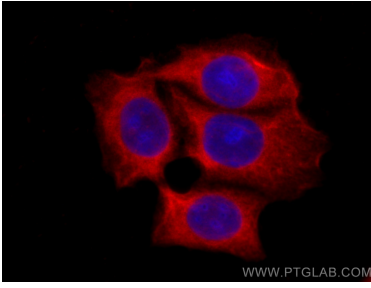
For technical support and original validation data for this product please contact:

T: 1 (888) 4PTGLAB (1-888-478-4522) (toll free
in USA), or 1(312) 455-8498 (outside USA)

E: proteintech@ptglab.com
W: ptglab.com

This product is exclusively available under Proteintech Group brand and is not available to purchase from any other manufacturer.

Ausgewählte Validierungsdaten



Immunofluorescent analysis of (-20°C Ethanol) fixed MCF-7 cells using CoraLite®594 HSP27 antibody (CL594-66767, Clone: 3E7A1) at dilution of 1:200.