

Nur für Forschungszwecke

PTPN11 Monoklonaler Antikörper

Katalog-Nr.:CL594-66795



Allgemeine Informationen

Katalog-Nr.: CL594-66795	GenBank-Zugangsnummer: BC008692	Reinigungsmethode: Protein-G-Reinigung
Größe: 100ul , Konzentration: 1000 µg/ml von5781 Nanodrop;	GeneID (NCBI): 5781	CloneNo.: 3F8A8
Wirt: Maus	Vollständiger Name: protein tyrosine phosphatase, non-receptor type 11	Empfohlene Verdünnungen: IF 1:50-1:500
Isotyp: IgG1	Berechnete Masse: 597 aa, 68 kDa	Anregungs-/Emissionsmaxima-Wellenlängen: 588 nm / 604 nm
Immunogen Katalognummer: AG13649	Beobachtete Masse: 68 kDa	

Anwendungen

Geprüfte Anwendungen: IF	Positivkontrollen: IF : MCF-7-Zellen,
Getestete Reaktivität: Human, Maus, Ratte	

Hintergrundinformationen

PTPN11 (protein tyrosine phosphatase, non-receptor type 11) is also named as PTP-1D, PTP2, PTP2C, PTP3, SHP2, CFC, CFC, BPTP3, SH-PTP2, SH-PTP3, MGC14433 and belongs to the protein-tyrosine phosphatase family and non-receptor class 2 subfamily. It modulates and regulates signaling through numerous pathways, many of which are active in the developing endocardial cushions and implicated the ERK pathway as a central mechanism (PMID: 19017799). Its signaling may play equally important roles in retinal survival in both physiological and pathological conditions (PMID: 21576358). Defects in PTPN11 are the cause of LEOPARD syndrome type 1 (LEOPARD1), Noonan syndrome type 1 (NS1), juvenile myelomonocytic leukemia (JMML) and metachondromatosis (MC). It has 3 isoforms produced by alternative splicing.

Lagerung

Lagerungsbedingungen:
Bei -20°C lagern. Vor Licht schützen. Nach dem Versand ein Jahr stabil.
Lagerungspuffer:
BS mit 50% Glycerin, 0,05% Proclin300, 0,5% BSA, pH 7,3.
Aliquotieren ist nicht notwendig bei -20°C Lagerung

*** 20ul-Größen enthalten 0.1% BSA

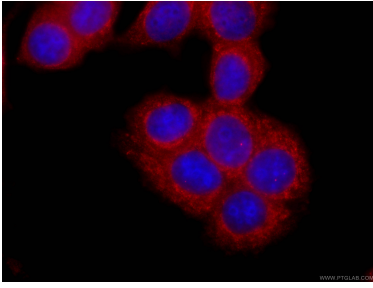
For technical support and original validation data for this product please contact:

T: 1 (888) 4PTGLAB (1-888-478-4522) (toll free in USA), or 1(312) 455-8498 (outside USA)

E: proteintech@ptglab.com
W: ptglab.com

This product is exclusively available under Proteintech Group brand and is not available to purchase from any other manufacturer.

Ausgewählte Validierungsdaten



Immunofluorescent analysis of (-20°C Ethanol) fixed MCF-7 cells using CL594-66795 (PTPN11 antibody) at dilution of 1:100.