

Nur für Forschungszwecke

# LGMN Monoklonaler Antikörper

Katalog-Nr.:CL594-67017



## Allgemeine Informationen

|   |   |   |
|---|---|---|
| <b>Katalog-Nr.:</b><br>CL594-67017                                      | <b>GenBank-Zugangsnummer:</b><br>BC003061 | <b>Reinigungsmethode:</b><br>Protein-G-Reinigung                        |
| <b>Größe:</b><br>100ul , Konzentration: 1000 µg/ml von5641<br>Nanodrop; | <b>GeneID (NCBI):</b><br>1F2B12           | <b>CloneNo.:</b><br>1F2B12  |
| <b>Wirt:</b><br>Maus  | <b>Vollständiger Name:</b><br>legumain    | <b>Empfohlene Verdünnungen:</b><br>IF 1:50-1:500                        |
| <b>Isotyp:</b><br>IgG1  | <b>Berechnete Masse:</b><br>49 kDa        | <b>Anregungs-/Emissionsmaxima-<br/>Wellenlängen:</b><br>588 nm / 604 nm |
| <b>Immunogen Katalognummer:</b><br>AG7218                               | <b>Beobachtete Masse:</b><br>36 kDa       |   |

## Anwendungen

|  |   |
|--|---|
| <b>Geprüfte Anwendungen:</b><br>IF     | <b>Positivkontrollen:</b><br>IF : humanes Nierengewebe, |
| <b>Getestete Reaktivität:</b><br>Human |   |

## Hintergrundinformationen

LGMN (Legumain), also known as asparaginyl endopeptidase or AEP, is a broadly expressed lysosomal cysteine endopeptidase that belongs to peptidase family C13 and specifically hydrolyzes substrate asparaginyl bonds (PMID: 9065484). LGMN directly regulates diverse physiological and pathological processes by remodeling tissue-specific targets (PMID: 25205715, 21292981, 18820679). In addition, LGMN indirectly contributes to atherosclerotic plaque instability through activation of cathepsin L in the arterial ECM (PMID: 19671471, 18377911). LGMN is secreted as inactive prolegumain (56 kDa) and processed into enzymatically active 46 and 36 kDa forms, as well as a 17 kDa enzymatically inactive C-terminal fragment (PMID: 28162997, PMID: 19671471).

## Lagerung

**Lagerungsbedingungen:**  
Bei -20°C lagern. Vor Licht schützen.  
**Lagerungspuffer:**  
BS mit 50% Glycerin, 0,05% Proclin300, 0,5% BSA, pH 7,3.  
Aliquotieren ist nicht notwendig bei -20°C Lagerung

\*\*\* 20ul-Größen enthalten 0.1% BSA

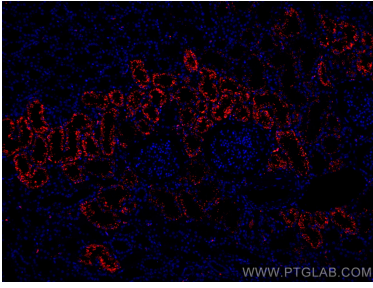
For technical support and original validation data for this product please contact:

T: 1 (888) 4PTGLAB (1-888-478-4522) (toll free  
in USA), or 1(312) 455-8498 (outside USA)

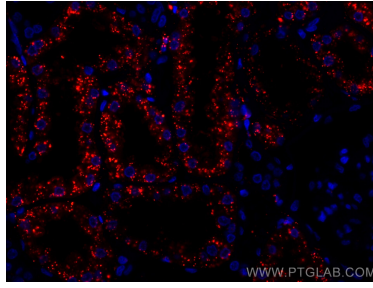
E: proteintech@ptglab.com  
W: ptglab.com

This product is exclusively available under Proteintech Group brand and is not available to purchase from any other manufacturer.

## Ausgewählte Validierungsdaten



Immunofluorescent analysis of (4% PFA) fixed human kidney tissue using CoraLite®594 LGMN antibody (CL594-67017, Clone: 1F2B12 ) at dilution of 1:200.



Immunofluorescent analysis of (4% PFA) fixed human kidney tissue using CoraLite®594 LGMN antibody (CL594-67017, Clone: 1F2B12 ) at dilution of 1:200.