

Nur für Forschungszwecke

GLUD1 Monoklonaler Antikörper

Katalog-Nr.:CL594-67026



Allgemeine Informationen

Katalog-Nr.: CL594-67026	GenBank-Zugangsnummer: BC040132	Reinigungsmethode: Protein-A-Reinigung
Größe: 100ul , Konzentration: 1000 µg/ml von2746 Nanodrop;	GeneID (NCBI): 4G10D3	CloneNo.: 4G10D3
Wirt: Maus	Vollständiger Name: glutamate dehydrogenase 1	Empfohlene Verdünnungen: IF 1:50-1:500
Isotyp: IgG2b	Berechnete Masse: 61 kDa	Anregungs-/Emissionsmaxima- Wellenlängen: 588 nm / 604 nm
Immunogen Katalognummer: AG6179	Beobachtete Masse: 45-55 kDa	

Anwendungen

Geprüfte Anwendungen: IF	Positivkontrollen: IF : humanes Leberkarzinomgewebe,
Getestete Reaktivität: Human, Maus, Ratte	

Hintergrundinformationen

Human glutamate dehydrogenase (GDH), an enzyme central to the metabolism of glutamate, is known to exist in housekeeping and nerve tissue-specific isoforms encoded by the GLUD1 and GLUD2 genes, respectively. It catalyses the reversible inter-conversion of glutamate to alpha-ketoglutarate and ammonia, thus interconnecting amino acid and carbohydrate metabolism. GLUD1 might contribute to the formation of specific synapses in the hippocampus such as those formed by the projecting neurons of the entorhinal cortex(PMID: 22138648). GLUD1 has a calculated molecular mass of 61 kDa and an apparent molecular mass of 45-55 kDa with the 53aa transit peptide removed.

Lagerung

Lagerungsbedingungen:
Bei -20°C lagern. Vor Licht schützen. Nach dem Versand ein Jahr stabil.
Lagerungspuffer:
BS mit 50% Glycerin, 0,05% Proclin300, 0,5% BSA, pH 7,3.
Aliquotieren ist nicht notwendig bei -20°C Lagerung

***** 20ul-Größen enthalten 0.1% BSA**

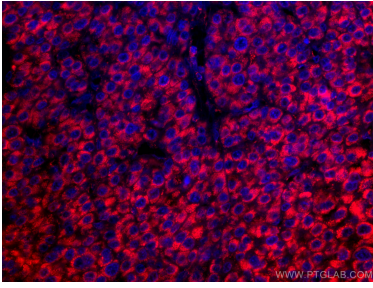
For technical support and original validation data for this product please contact:

T: 1 (888) 4PTGLAB (1-888-478-4522) (toll free
in USA), or 1(312) 455-8498 (outside USA)

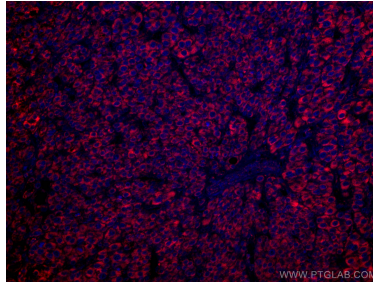
E: proteintech@ptglab.com
W: ptglab.com

This product is exclusively available under Proteintech Group brand and is not available to purchase from any other manufacturer.

Ausgewählte Validierungsdaten



Immunofluorescent analysis of (4% PFA) fixed human liver cancer tissue using CoraLite®594-conjugated GLUD1 antibody (CL594-67026, Clone: 4G10D3) at dilution of 1:200.



Immunofluorescent analysis of (4% PFA) fixed human liver cancer tissue using CoraLite®594-conjugated GLUD1 antibody (CL594-67026, Clone: 4G10D3) at dilution of 1:200.