

## Allgemeine Informationen

<b>Katalog-Nr.:</b> CL594-67041	<b>GenBank-Zugangsnummer:</b> BC015831	<b>Reinigungsmethode:</b> Protein-A-Reinigung
<b>Größe:</b> 100ul , Konzentration: 1000 µg/ml von1776 Nanodrop;	<b>GeneID (NCBI):</b> von1776	<b>CloneNo.:</b> 1A4D4
<b>Wirt:</b> Maus	<b>Vollständiger Name:</b> deoxyribonuclease I-like 3	<b>Empfohlene Verdünnungen:</b> IF 1:50-1:500
<b>Isotyp:</b> IgG2a	<b>Berechnete Masse:</b> 305 aa, 36 kDa	<b>Anregungs-/Emissionsmaxima- Wellenlängen:</b> 588 nm / 604 nm
<b>Immunogen Katalognummer:</b> AG28187	<b>Beobachtete Masse:</b> 33-38 kDa	

## Anwendungen

<b>Geprüfte Anwendungen:</b> FC (Intra), IF	<b>Positivkontrollen:</b> IF : HepG2-Zellen,
<b>Getestete Reaktivität:</b> Human, Maus	

## Hintergrundinformationen

Deoxyribonuclease 1-like 3 (DNASE1L3, DNase gamma, DNase Y, LS-DNase) is member of a DNASE1 protein family that is identified by similar biochemical properties such as Ca<sup>2+</sup>/Mg<sup>2+</sup>- dependency and an optimal pH of about 7.0 as well as by a high similarity in their nucleic acid and amino acid sequences [PMID:15796714]. It is an endonuclease and cleaves double-stranded DNA (and single-stranded DNA) producing 3'-OH/5'-P ends, which is Ca<sup>2+</sup>/Mg<sup>2+</sup>-dependent and inhibited by Zn<sup>2+</sup>, but not by monomeric actin [PMID:9665719]. In addition, it has been suggested to be involved in apoptotic DNA fragmentation of thymocytes' neuronal PC12 cells, C2C12 myoblasts and of cell lines expressing the recombinant nuclease [PMID: 7957253, 9307016]

## Lagerung

**Lagerungsbedingungen:**  
Bei -20°C lagern. Vor Licht schützen. Nach dem Versand ein Jahr stabil.  
**Lagerungspuffer:**  
BS mit 50% Glycerin, 0,05% Proclin300, 0,5% BSA, pH 7,3.  
Aliquotieren ist nicht notwendig bei -20°C Lagerung

**\*\*\* 20ul-Größen enthalten 0.1% BSA**

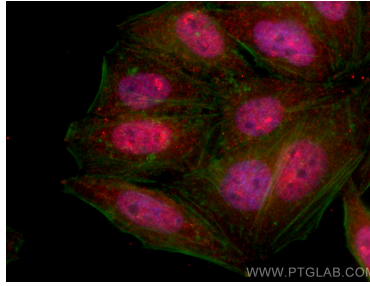
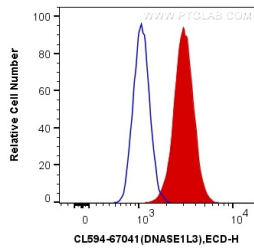
For technical support and original validation data for this product please contact:

T: 1 (888) 4PTGLAB (1-888-478-4522) (toll free  
in USA), or 1(312) 455-8498 (outside USA)

E: [proteintech@ptglab.com](mailto:proteintech@ptglab.com)  
W: [ptglab.com](http://ptglab.com)

**This product is exclusively available under Proteintech Group brand and is not available to purchase from any other manufacturer.**

## Ausgewählte Validierungsdaten



1X10<sup>6</sup> HepG2 cells were intracellularly stained with 0.4 ug CoraLite®594 Anti-Human DNASE1L3 (CL594-67041, Clone:1A4D4) (red), or 0.4 ug Mouse IgG2a Isotype Control (CL594-66360-2, Clone: K11A1B2A2) (blue). Cells were fixed with 4% PFA and permeabilized with Flow Cytometry Perm Buffer (PF00011-C).

Immunofluorescent analysis of (4% PFA) fixed HepG2 cells using CoraLite®594 DNASE1L3 antibody (CL594-67041, Clone: 1A4D4) at dilution of 1:200, CL488-Phalloidin (green).