

Nur für Forschungszwecke

# PI3 Kinase p110 Alpha Monoklonaler Antikörper



Katalog-Nr.:CL594-67071

## Allgemeine Informationen

<b>Katalog-Nr.:</b> CL594-67071	<b>GenBank-Zugangsnummer:</b> BC113601	<b>Reinigungsmethode:</b> Protein-A-Reinigung
<b>Größe:</b> 100ul , Konzentration: 2000 µg/ml von5290 Nanodrop;	<b>GeneID (NCBI):</b> von5290	<b>CloneNo.:</b> 1F6A7
<b>Wirt:</b> Maus	<b>Vollständiger Name:</b> phosphoinositide-3-kinase, catalytic, alpha polypeptide	<b>Empfohlene Verdünnungen:</b> IF 1:50-1:500
<b>Isotyp:</b> IgG2b	<b>Berechnete Masse:</b> 1068 aa, 124 kDa	<b>Anregungs-/Emissionsmaxima- Wellenlängen:</b> 588 nm / 604 nm
<b>Immunogen Katalognummer:</b> AG17392	<b>Beobachtete Masse:</b> 110 kDa	

## Anwendungen

<b>Geprüfte Anwendungen:</b> FC (Intra), IF	<b>Positivkontrollen:</b> IF : HeLa-Zellen,
<b>Getestete Reaktivität:</b> Human	

## Hintergrundinformationen

PIK3CA belongs to the PI3/PI4-kinase family. It phosphorylates PtdIns, PtdIns4P and PtdIns(4,5)P2 with a preference for PtdIns(4,5)P2. Defects in PIK3CA are associated with colorectal cancer (CRC). Defects in PIK3CA are associated with breast cancer. Defects in PIK3CA are associated with ovarian cancer. Defects in PIK3CA may underlie hepatocellular carcinoma (HCC). Defects in PIK3CA are a cause of keratosis seborrheic (KERSEB).

## Lagerung

**Lagerungsbedingungen:**  
Bei -20°C lagern. Vor Licht schützen. Nach dem Versand ein Jahr stabil.  
**Lagerungspuffer:**  
BS mit 50% Glycerin, 0,05% Proclin300, 0,5% BSA, pH 7,3.  
**Aliquotieren ist nicht notwendig bei -20°C Lagerung**

**\*\*\* 20ul-Größen enthalten 0.1% BSA**

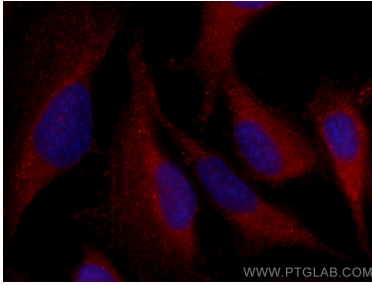
For technical support and original validation data for this product please contact:

T: 1 (888) 4PTGLAB (1-888-478-4522) (toll free  
in USA), or 1(312) 455-8498 (outside USA)

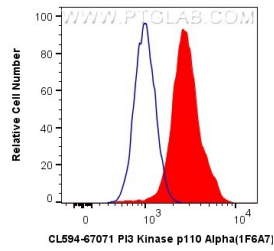
E: proteintech@ptglab.com  
W: ptglab.com

**This product is exclusively available under Proteintech Group brand and is not available to purchase from any other manufacturer.**

## Ausgewählte Validierungsdaten



Immunofluorescent analysis of (-20°C Methanol) fixed HeLa cells using CoraLite®594 PI3 Kinase p110 Alpha antibody (CL594-67071, Clone: 1F6A7) at dilution of 1:200.



1X10<sup>6</sup> Jurkat cells were intracellularly stained with 0.4 ug CoraLite®594 Anti-Human PI3 Kinase p110 Alpha (CL594-67071, Clone:1F6A7) (red), or 0.4 ug Mouse IgG2b Isotype Control (CL594-66360-3, Clone: K11B8C4B5) (blue). Cells were fixed with 4% PFA and permeabilized with Flow Cytometry Perm Buffer (PF00011-C).