

Nur für Forschungszwecke

CES1 Monoklonaler Antikörper

Katalog-Nr.:CL594-67079



Allgemeine Informationen

Katalog-Nr.: CL594-67079	GenBank-Zugangsnummer: BC012418	Reinigungsmethode: Protein-G-Reinigung
Größe: 100ul , Konzentration: 890 µg/ml von Nanodrop;	GeneID (NCBI): 1066	CloneNo.: 1C11C1
Wirt: Maus	Vollständiger Name: carboxylesterase 1 (monocyte/macrophage serine esterase 1)	Empfohlene Verdünnungen: IF 1:50-1:500
Isotyp: IgG1	Berechnete Masse: 566 aa, 62 kDa	Anregungs-/Emissionsmaxima- Wellenlängen: 588 nm / 604 nm
Immunogen Katalognummer: AG10647	Beobachtete Masse: 60-63 kDa	

Anwendungen

Geprüfte Anwendungen: IF	Positivkontrollen: IF : HepG2-Zellen,
Getestete Reaktivität: Human	

Hintergrundinformationen

CES1(liver carboxylesterase 1) is also named as CES2, SES1 and belongs to the type-B carboxylesterase/lipase family. The deduced 567-amino acid protein contains a putative 18-amino acid signal peptide and a characteristic C-terminal endoplasmic reticulum retention signal (HXEL). It is the major hydrolytic enzyme responsible for the metabolism of numerous therapeutic agents as well as endogenous substrates. Westernblot analysis demonstrated that CES1 is expressed in human liver microsomes (HLM) but not in human intestinal microsomes (HIM) (PMID:19185566).

Lagerung

Lagerungsbedingungen:
Bei -20°C lagern. Vor Licht schützen.
Lagerungspuffer:
BS mit 50% Glycerin, 0,05% Proclin300, 0,5% BSA, pH 7,3.
Aliquotieren ist nicht notwendig bei -20°C Lagerung

***** 20ul-Größen enthalten 0.1% BSA**

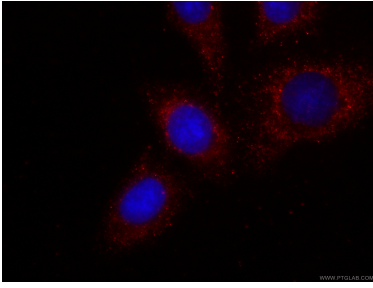
For technical support and original validation data for this product please contact:

T: 1 (888) 4PTGLAB (1-888-478-4522) (toll free
in USA), or 1(312) 455-8498 (outside USA)

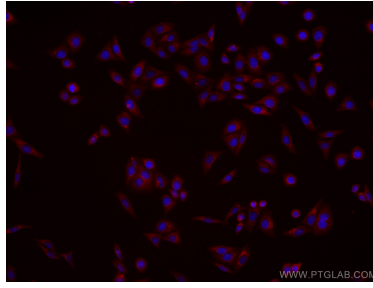
E: proteintech@ptglab.com
W: ptglab.com

This product is exclusively available under Proteintech Group brand and is not available to purchase from any other manufacturer.

Ausgewählte Validierungsdaten



Immunofluorescent analysis of (-20°C Ethanol) fixed HepG2 cells using CL594-67079 (CES1 antibody) at dilution of 1:100.



Immunofluorescent analysis of (-20°C Ethanol) fixed HepG2 cells using CoraLite®594-conjugated CES1 antibody (CL594-67079, Clone: 1C11C1) at dilution of 1:100.