

Nur für Forschungszwecke

# L1CAM Monoklonaler Antikörper

Katalog-Nr.:CL594-67115



## Allgemeine Informationen

<b>Katalog-Nr.:</b> CL594-67115	<b>GenBank-Zugangsnummer:</b> BC126229	<b>Reinigungsmethode:</b> Protein-G-Reinigung
<b>Größe:</b> 100ul , Konzentration: 1000 µg/ml von3897 Nanodrop;	<b>GeneID (NCBI):</b> 3897	<b>CloneNo.:</b> 3H7B9
<b>Wirt:</b> Maus	<b>Vollständiger Name:</b> L1 cell adhesion molecule	<b>Empfohlene Verdünnungen:</b> IF 1:50-1:500
<b>Isotyp:</b> IgG1	<b>Berechnete Masse:</b> 1257 aa, 140 kDa	<b>Anregungs-/Emissionsmaxima- Wellenlängen:</b> 588 nm / 604 nm
<b>Immunogen Katalognummer:</b> AG17706	<b>Beobachtete Masse:</b> 220 kDa	

## Anwendungen

<b>Geprüfte Anwendungen:</b> IF	<b>Positivkontrollen:</b> IF : Maushirngewebe,
<b>Getestete Reaktivität:</b> Hausschwein, Human, Maus, Ratte	

## Hintergrundinformationen

L1CAM, also known as NCAM-L1 or CD171, is a cell adhesion molecule of the immunoglobulin superfamily. It is a 200-220 kDa transmembrane glycoprotein composed of six Ig-like domains and five fibronectin type III repeats followed by a transmembrane region and a highly conserved cytoplasmic tail (PMID: 3412448; 22796939). L1CAM is primarily expressed in the nervous system and is involved in neuron-neuron adhesion, neurite fasciculation, outgrowth of neurites, cerebellar granule cell migration, neurite outgrowth on Schwann cells and interactions among epithelial cells of intestinal crypts (PMID: 3412448; 10767310). L1CAM is overexpressed in many human cancers and is often associated with bad prognosis (PMID: 27267927; 26111503).

## Lagerung

**Lagerungsbedingungen:**  
Bei -20°C lagern. Vor Licht schützen.  
**Lagerungspuffer:**  
BS mit 50% Glycerin, 0,05% Proclin300, 0,5% BSA, pH 7,3.  
**Aliquotieren ist nicht notwendig bei -20°C Lagerung**

**\*\*\* 20ul-Größen enthalten 0.1% BSA**

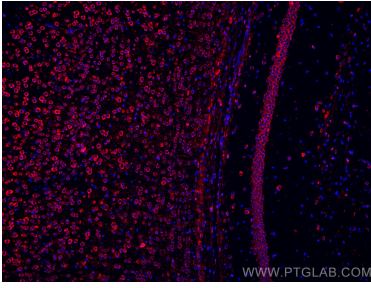
For technical support and original validation data for this product please contact:

T: 1 (888) 4PTGLAB (1-888-478-4522) (toll free  
in USA), or 1(312) 455-8498 (outside USA)

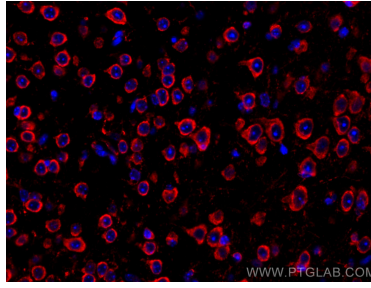
E: [proteintech@ptglab.com](mailto:proteintech@ptglab.com)  
W: [ptglab.com](http://ptglab.com)

**This product is exclusively available under Proteintech Group brand and is not available to purchase from any other manufacturer.**

## Ausgewählte Validierungsdaten



Immunofluorescent analysis of (4% PFA) fixed mouse brain tissue using CoraLite®594 L1CAM antibody (CL594-67115, Clone: 3H7B9) at dilution of 1:200.



Immunofluorescent analysis of (4% PFA) fixed mouse brain tissue using CoraLite®594 L1CAM antibody (CL594-67115, Clone: 3H7B9) at dilution of 1:200.