

Nur für Forschungszwecke

PI3 Kinase p110 Beta Monoklonaler Antikörper



Katalog-Nr.:CL594-67121

Allgemeine Informationen

Katalog-Nr.: CL594-67121	GenBank-Zugangsnummer: BC114432	Reinigungsmethode: Protein-G-Reinigung
Größe: 100ul , Konzentration: 1000 µg/ml von5291 Nanodrop;	GeneID (NCBI): von5291	CloneNo.: 1B2A1
Wirt: Maus	Vollständiger Name: phosphoinositide-3-kinase, catalytic, beta polypeptide	Empfohlene Verdünnungen: IF 1:50-1:500
Isotyp: IgG1	Berechnete Masse: 1070 aa, 123 kDa	Anregungs-/Emissionsmaxima- Wellenlängen: 588 nm / 604 nm
Immunogen Katalognummer: AG17505	Beobachtete Masse: 120-130 kDa	

Anwendungen

Geprüfte Anwendungen: IF	Positivkontrollen: IF : HeLa-Zellen,
Getestete Reaktivität: Human, Ratte	

Hintergrundinformationen

PIK3CB(phosphatidylinositol 4,5-bisphosphate 3-kinase catalytic subunit beta isoform) is also named as PIK3C1, PI3K-beta, p110beta. The gene encodes a 1070 amino acid protein which belongs to the PI3/PI4-kinase family. Phosphoinositide 3-kinases (PI3Ks) have been implicated as participants in signaling pathways regulating cell growth by virtue of their activation in response to various mitogenic stimuli. The class I PI3 kinases are heterodimers composed of 110 kDa catalytic subunits that associate with regulatory adaptor proteins. Four class I catalytic subunits have been identified, PIK3CA (p110 α), PIK3CB (p110 β), PIK3CD (p110 δ) and PIK3CG (p110 γ) (PMID:19177002).

Lagerung

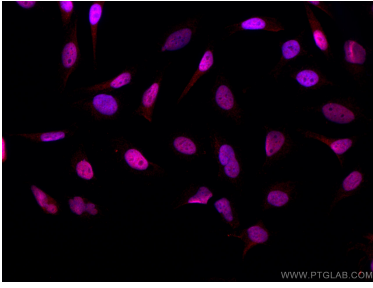
Lagerungsbedingungen:
Bei -20°C lagern. Vor Licht schützen.
Lagerungspuffer:
BS mit 50% Glycerin, 0,05% Proclin300, 0,5% BSA, pH 7,3.
Aliquotieren ist nicht notwendig bei -20°C Lagerung

***** 20ul-Größen enthalten 0.1% BSA**

For technical support and original validation data for this product please contact:
T: 1 (888) 4PTGLAB (1-888-478-4522) (toll free in USA), or 1(312) 455-8498 (outside USA)
E: proteintech@ptglab.com
W: ptglab.com

This product is exclusively available under Proteintech Group brand and is not available to purchase from any other manufacturer.

Ausgewählte Validierungsdaten



Immunofluorescent analysis of (4% PFA) fixed HeLa cells using CoraLite®594 PI3 Kinase p110 Beta antibody (CL594-67121, Clone: 1B2A1) at dilution of 1:200. DAPI (blue).