

Nur für Forschungszwecke

# ENO1 Monoklonaler Antikörper

Katalog-Nr.:CL594-67187



## Allgemeine Informationen

|  |  |  |
|--|--|--|
| <b>Katalog-Nr.:</b><br>CL594-67187                         | <b>GenBank-Zugangsnummer:</b><br>BC015641        | <b>Reinigungsmethode:</b><br>Thiophiler Affinitätschromatograph    |
| <b>Größe:</b><br>100ul , Konzentration: 1000 µg/ml von2023 | <b>GeneID (NCBI):</b><br>von2023                 | <b>CloneNo.:</b><br>1D6E8  |
| <b>Nanodrop;</b>   | <b>Vollständiger Name:</b><br>enolase 1, (alpha) | <b>Empfohlene Verdünnungen:</b><br>IF 1:50-1:500                   |
| <b>Wirt:</b><br>Maus                                       | <b>Berechnete Masse:</b><br>47 kDa               | <b>Anregungs-/Emissionsmaxima-Wellenlängen:</b><br>588 nm / 604 nm |
| <b>Isotyp:</b><br>IgM                                      | <b>Beobachtete Masse:</b><br>47 kDa              |  |
| <b>Immunogen Katalognummer:</b><br>AG17518                 |  |  |

## Anwendungen

|  |  |
|--|--|
| <b>Geprüfte Anwendungen:</b><br>IF                               | <b>Positivkontrollen:</b><br>IF : HeLa-Zellen, |
| <b>Getestete Reaktivität:</b><br>Hausschwein, Human, Maus, Ratte |  |

## Hintergrundinformationen

ENO1, also named as NNE, ENO1L1, MBPB1, MPB1 and MBP1, belongs to the enolase family. ENO1 is a metabolic enzyme involved in the synthesis of pyruvate. It also acts as a plasminogen receptor and mediates the activation of plasmin and extracellular matrix degradation. In tumor cells, ENO1 is up-regulated and supports the Warburg effect; it is expressed at the cell surface, where it promotes cancer invasion, and is subjected to a specific array of post-translational modifications, namely acetylation, methylation and phosphorylation. ENO1 overexpression and post-translational modifications could be of diagnostic and prognostic value in many cancer types. (PMID: 27814656)

## Lagerung

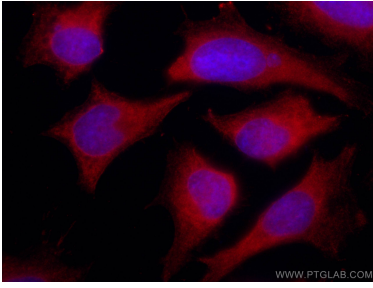
**Lagerungsbedingungen:**  
Bei -20°C lagern. Vor Licht schützen. Nach dem Versand ein Jahr stabil.  
**Lagerungspuffer:**  
BS mit 50% Glycerin, 0,05% Proclin300, 0,5% BSA, pH 7,3.  
**Aliquotieren ist nicht notwendig bei -20°C Lagerung**

**\*\*\* 20ul-Größen enthalten 0.1% BSA**

For technical support and original validation data for this product please contact:  
T: 1 (888) 4PTGLAB (1-888-478-4522) (toll free in USA), or 1(312) 455-8498 (outside USA)  
E: proteintech@ptglab.com  
W: ptglab.com

**This product is exclusively available under Proteintech Group brand and is not available to purchase from any other manufacturer.**

## Ausgewählte Validierungsdaten



Immunofluorescent analysis of (-20°C Ethanol) fixed HeLa cells using Coralite®594-conjugated ENO1 antibody (CL594-67187, Clone: 1D6E8 ) at dilution of 1:100.