

Nur für Forschungszwecke

FUCA1 Monoklonaler Antikörper

Katalog-Nr.:CL594-67251



Allgemeine Informationen

Katalog-Nr.: CL594-67251	GenBank-Zugangsnummer: BC017338	Reinigungsmethode: Protein-A-Reinigung
Größe: 100ul , Konzentration: 1000 µg/ml von2517 Nanodrop;	GeneID (NCBI): Vollständiger Name: fucosidase, alpha-L- 1, tissue	CloneNo.: 1G5C5
Wirt: Maus	Berechnete Masse: 461 aa, 53 kDa	Empfohlene Verdünnungen: IF 1:50-1:500
Isotyp: IgG2b	Beobachtete Masse: 50-56 kDa	Anregungs-/Emissionsmaxima- Wellenlängen: 588 nm / 604 nm
Immunogen Katalognummer: AG9638		

Anwendungen

Geprüfte Anwendungen: IF	Positivkontrollen: IF : humanes Leberkarzinomgewebe,
Getestete Reaktivität: Human, Maus	

Hintergrundinformationen

FUCA1(a-L-Fucosidase) is a lysosomal glycosidase which is ubiquitous in eukaryotic cells. This enzyme is usually found as a soluble component of the lysosome and functions as an acid hydrolase in the degradation of numerous and diverse fucoglycoconjugates. The mammalian a-L-fucosidases are relatively large, multisubunit glycoproteins which exist in multiple molecular isoforms. This enzyme may have a role in sperm-egg interactions in the reproductive tract of the female rat. There is a precursor 54 kDa form of rat sperm fucosidase which is processed to a mature 52 kDa form of the enzyme (PMID:8836125). This protein from rat epididymis is a tetramer of 210-220 kDa, made up by two pairs of subunits of 47 and 60 kDa, and the one from human seminal plasma exists in different oligomeric forms, that is, as a dimer, as a tetramer, and as a hexamer made up of a single subunit of 56-57 kDa (PMID:16736526).

Lagerung

Lagerungsbedingungen:
Bei -20°C lagern. Vor Licht schützen.
Lagerungspuffer:
BS mit 50% Glycerin, 0,05% Proclin300, 0,5% BSA, pH 7,3.
Aliquotieren ist nicht notwendig bei -20°C Lagerung

*** 20ul-Größen enthalten 0.1% BSA

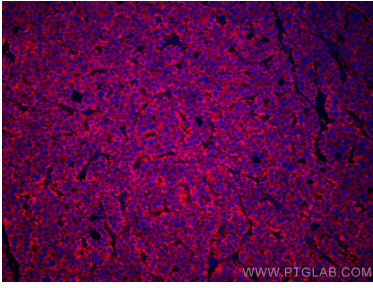
For technical support and original validation data for this product please contact:

T: 1 (888) 4PTGLAB (1-888-478-4522) (toll free
in USA), or 1(312) 455-8498 (outside USA)

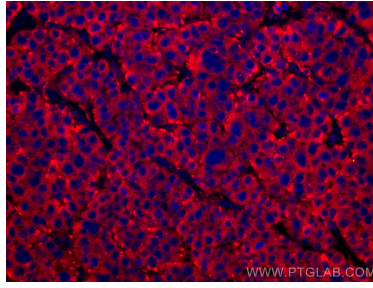
E: proteintech@ptglab.com
W: ptglab.com

This product is exclusively available under Proteintech Group brand and is not available to purchase from any other manufacturer.

Ausgewählte Validierungsdaten



Immunofluorescent analysis of (4% PFA) fixed human liver cancer tissue using CoraLite®594 FUCA1 antibody (CL594-67251, Clone: 1G5C5) at dilution of 1:200. DAPI (blue).



Immunofluorescent analysis of (4% PFA) fixed human liver cancer tissue using CoraLite®594 FUCA1 antibody (CL594-67251, Clone: 1G5C5) at dilution of 1:200. DAPI (blue).