

Nur für Forschungszwecke

# Glucagon Monoklonaler Antikörper

Katalog-Nr.:CL594-67286



## Allgemeine Informationen

<b>Katalog-Nr.:</b> CL594-67286	<b>GenBank-Zugangsnummer:</b> BC005278	<b>Reinigungsmethode:</b> Protein-G-Reinigung
<b>Größe:</b> 100ul , Konzentration: 1000 µg/ml von2641 Nanodrop;	<b>GeneID (NCBI):</b> 2A8G1	<b>CloneNo.:</b> 2A8G1
<b>Wirt:</b> Maus	<b>Vollständiger Name:</b> glucagon	<b>Empfohlene Verdünnungen:</b> IF 1:200-1:800
<b>Isotyp:</b> IgG1	<b>Berechnete Masse:</b> 180 aa, 21 kDa	<b>Anregungs-/Emissionsmaxima-Wellenlängen:</b> 588 nm / 604 nm
<b>Immunogen Katalognummer:</b> AG10629		

## Anwendungen

<b>Geprüfte Anwendungen:</b> IF	<b>Positivkontrollen:</b> IF : Maus-Pankreasgewebe,
<b>Getestete Reaktivität:</b> Human, Maus	

## Hintergrundinformationen

Glucagon is a 29-amino acid peptide hormone secreted from the pancreatic alpha cells with a powerful stimulatory effect on hepatic glucose production acting to increase plasma glucose levels. Glucagon is best known as the counter-regulatory hormone to INS, and normal glucose homeostasis depends largely on the balanced secretion of INS and glucagon from the pancreatic beta and alpha cells, respectively. The regulation of glucose metabolism by glucagon is mediated by its direct action on the peripheral tissues such as the liver and also by the brain. Glucagon is also released postprandially in a transient manner, which was shown to be involved in inhibition of food intake via reduction of meal size.

## Lagerung

**Lagerungsbedingungen:**  
Bei -20°C lagern. Vor Licht schützen. Nach dem Versand ein Jahr stabil.  
**Lagerungspuffer:**  
BS mit 50% Glycerin, 0,05% Proclin300, 0,5% BSA, pH 7,3.  
Aliquotieren ist nicht notwendig bei -20°C Lagerung

\*\*\* 20ul-Größen enthalten 0.1% BSA

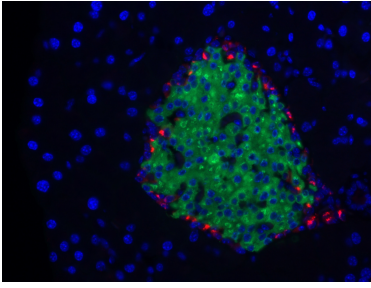
For technical support and original validation data for this product please contact:

T: 1 (888) 4PTGLAB (1-888-478-4522) (toll free in USA), or 1(312) 455-8498 (outside USA)

E: [proteintech@ptglab.com](mailto:proteintech@ptglab.com)  
W: [ptglab.com](http://ptglab.com)

This product is exclusively available under Proteintech Group brand and is not available to purchase from any other manufacturer.

## Ausgewählte Validierungsdaten



Immunofluorescent analysis of (4% PFA) fixed mouse pancreas tissue using the CoraLite®594-conjugated version of this antibody, CL594-67286 (Glucagon antibody), at dilution of 1:400. The B cells of the islets of Langerhans was labelled in green with CL488-66198(INS antibody).