

Nur für Forschungszwecke

RAB2A Monoklonaler Antikörper

Katalog-Nr.:CL594-67501



Allgemeine Informationen

Katalog-Nr.: CL594-67501	GenBank-Zugangsnummer: BC008929	Reinigungsmethode: Protein-A-Reinigung
Größe: 100ul , Konzentration: 1000 µg/ml von5862 Nanodrop;	GeneID (NCBI): 5862	CloneNo.: 3E1B10
Wirt: Maus	Vollständiger Name: RAB2A, member RAS oncogene family	Anregungs-/Emissionsmaxima- Wellenlängen: 588 nm / 604 nm
Isotyp: IgG2b	Berechnete Masse: 24 kDa	
Immunogen Katalognummer: AG7939	Beobachtete Masse: 21 kDa	

Anwendungen

Geprüfte Anwendungen:
FC (Intra)

Getestete Reaktivität:
Human, Maus, Ratte

Hintergrundinformationen

The protein belongs to the Rab family, members of which are small molecular weight guanosine triphosphatases (GTPases) that contain highly conserved domains involved in GTP binding and hydrolysis. The Rabs are membrane-bound proteins, involved in vesicular fusion and trafficking. This protein is a resident of pre-Golgi intermediates, and is required for protein transport from the endoplasmic reticulum (ER) to the Golgi complex.

Lagerung

Lagerungsbedingungen:
Bei -20°C lagern. Vor Licht schützen. Nach dem Versand ein Jahr stabil.
Lagerungspuffer:
BS mit 50% Glycerin, 0,05% Proclin300, 0,5% BSA, pH 7,3.
Aliquotieren ist nicht notwendig bei -20°C Lagerung

*** 20ul-Größen enthalten 0.1% BSA

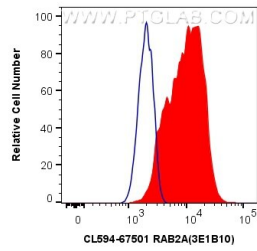
For technical support and original validation data for this product please contact:

T: 1 (888) 4PTGLAB (1-888-478-4522) (toll free
in USA), or 1(312) 455-8498 (outside USA)

E: proteintech@ptglab.com
W: ptglab.com

This product is exclusively available under Proteintech Group brand and is not available to purchase from any other manufacturer.

Ausgewählte Validierungsdaten



1X10⁶ HeLa cells were intracellularly stained with 0.4 ug Coralite®594 Anti-Human RAB2A (CL594-67501, Clone:3E1B10) (red), or 0.4 ug Control Antibody. Cells were fixed with 4% PFA and permeabilized with Flow Cytometry Perm Buffer (PF00011-C).