

Nur für Forschungszwecke

MCM6 Monoklonaler Antikörper

Katalog-Nr.:CL594-67989



Allgemeine Informationen

Katalog-Nr.: CL594-67989	GenBank-Zugangsnummer: BC032374	Reinigungsmethode: Protein-G-Reinigung
Größe: 100ul , Konzentration: 1000 µg/ml von4175 Nanodrop;	GeneID (NCBI): 4175	CloneNo.: 2E12H1
Wirt: Maus	Vollständiger Name: minichromosome maintenance complex component 6	Empfohlene Verdünnungen: IF 1:50-1:500
Isotyp: IgG1	Berechnete Masse: 821 aa, 93 kDa	Anregungs-/Emissionsmaxima- Wellenlängen: 588 nm / 604 nm
Immunogen Katalognummer: AG4354	Beobachtete Masse: 105 kDa	

Anwendungen

Geprüfte Anwendungen: FC (Intra), IF	Positivkontrollen: IF : HepG2-Zellen,
Getestete Reaktivität: Human, Maus, Ratte	

Hintergrundinformationen

The MCM genes were firstly identified in yeast defective in minichromosome maintenance and have since been shown to have roles in the progression of the cell cycle, and most of them are cell division control genes[PMID: 18096807]. MCM2-7 complex are suggested to be 'DNA licensing factors' which bind to the DNA after mitosis and enable DNA replication before being removed during S phase. Mini-chromosome maintenance 6 (MCM6) is one component of the MCM2-7 complex which is the putative replicative helicase essential for 'once per cell cycle' DNA replication initiation and elongation in eukaryotic cells[PMID: 9305914]. MCM6 single subunit forms homohexamer and contains an ATP-dependent and replication fork stimulated 3' to 5' DNA unwinding activity along with intrinsic DNA-dependent ATPase and ATP-binding activities [PMID:21336027]. The calculated molecular weight of MCM6 is 92 kDa, but the modified MCM6 is about 105 kDa.

Lagerung

Lagerungsbedingungen:
Bei -20°C lagern. Vor Licht schützen. Nach dem Versand ein Jahr stabil.
Lagerungspuffer:
BS mit 50% Glycerin, 0,05% Proclin300, 0,5% BSA, pH 7,3.
Aliquotieren ist nicht notwendig bei -20°C Lagerung

*** 20ul-Größen enthalten 0.1% BSA

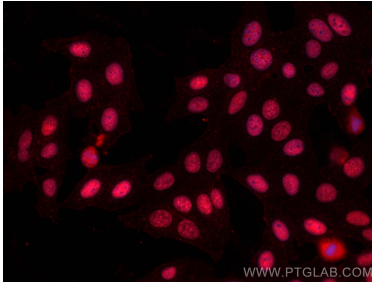
For technical support and original validation data for this product please contact:

T: 1 (888) 4PTGLAB (1-888-478-4522) (toll free
in USA), or 1(312) 455-8498 (outside USA)

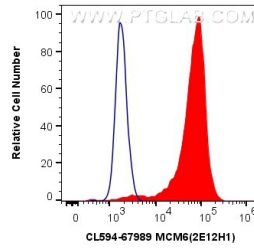
E: proteintech@ptglab.com
W: ptglab.com

This product is exclusively available under Proteintech Group brand and is not available to purchase from any other manufacturer.

Ausgewählte Validierungsdaten



Immunofluorescent analysis of (-20°C Ethanol) fixed HepG2 cells using CoraLite®594 MCM6 antibody (CL594-67989, Clone: 2E12H1) at dilution of 1:200.



1X10⁶ HepG2 cells were intracellularly stained with 0.4 ug CoraLite®594 Anti-Human MCM6 (CL594-67989, Clone:2E12H1) (red), or 0.4 ug Isotype Control. Cells were fixed and permeabilized with Transcription Factor Staining Buffer Kit (PF00011).