

Nur für Forschungszwecke

# PAX8 Polyklonaler Antikörper

Katalog-Nr.:CL647-10336

Vorgestelltes Produkt



## Allgemeine Informationen

<b>Katalog-Nr.:</b> CL647-10336	<b>GenBank-Zugangsnummer:</b> BC001060	<b>Reinigungsmethode:</b> Antigen-Affinitätsreinigung
<b>Größe:</b> 100ul , Konzentration: 1000 µg/ml von7849	<b>GeneID (NCBI):</b> paired box 8	<b>Empfohlene Verdünnungen:</b> IF 1:50-1:500
<b>Nanodrop;</b>	<b>Vollständiger Name:</b> paired box 8	<b>Anregungs-/Emissionsmaxima-Wellenlängen:</b> 654 nm / 674 nm
<b>Wirt:</b> Kaninchen	<b>Berechnete Masse:</b> 48 kDa	
<b>Isotyp:</b> IgG	<b>Beobachtete Masse:</b> 48 kDa, 58 kDa	
<b>Immunogen Katalognummer:</b> AG0306		

## Anwendungen

<b>Geprüfte Anwendungen:</b> IF	<b>Positivkontrollen:</b> IF : SKOV-3-Zellen,
<b>Getestete Reaktivität:</b> Human, Maus, Ratte	

## Hintergrundinformationen

PAX8 is a member of the paired box (PAX) family of transcription factors, typically containing a paired box domain and a paired-type homeodomain. It is expressed during organogenesis of the thyroid gland, kidney and Mullerian system. It is thought to regulate the expression of Wilms tumor suppressor (WT1) gene and mutations in PAX8 have been associated with Wilms tumor cells, thyroid and ovarian carcinomas. PAX8 is a useful marker in distinguishing ovarian carcinomas from mammary carcinomas (PMID: 18724243). PAX8 is expressed in a high percentage of ovarian serous, endometrioid, and clear cell carcinomas, but only rarely in primary ovarian mucinous adenocarcinomas.

This antibody can detect all 5 isoforms of PAX8 (31 kDa, 34 kDa, 41 kDa, 43 kDa and 48 kDa). A 58-60 kDa form has also been reported (PMID:15650356, 1049952). Proteintech's 10336-1-AP antibody has cross-reactivities with the other PAX family members.

## Lagerung

**Lagerungsbedingungen:**  
Bei -20°C lagern. Vor Licht schützen.  
**Lagerungspuffer:**  
BS mit 50% Glycerin, 0,05% Proclin300, 0,5% BSA, pH 7,3.  
**Aliquotieren ist nicht notwendig bei -20°C Lagerung**

**\*\*\* 20ul-Größen enthalten 0.1% BSA**

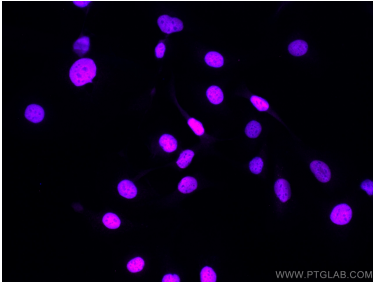
For technical support and original validation data for this product please contact:

T: 1 (888) 4PTGLAB (1-888-478-4522) (toll free in USA), or 1(312) 455-8498 (outside USA)

E: [proteintech@ptglab.com](mailto:proteintech@ptglab.com)  
W: [ptglab.com](http://ptglab.com)

**This product is exclusively available under Proteintech Group brand and is not available to purchase from any other manufacturer.**

## Ausgewählte Validierungsdaten



Immunofluorescent analysis of (4% PFA) fixed SKOV-3 cells using CoraLite® Plus 647 PAX8 antibody (CL647-10336) at dilution of 1:200.