

Nur für Forschungszwecke

# Cytokeratin 6A Polyklonaler Antikörper

Katalog-Nr.:CL647-10590



## Allgemeine Informationen

<b>Katalog-Nr.:</b> CL647-10590	<b>GenBank-Zugangsnummer:</b> BC008807	<b>Reinigungsmethode:</b> Antigen-Affinitätsreinigung
<b>Größe:</b> 100ul , Konzentration: 1000 µg/ml von3853	<b>GeneID (NCBI):</b> 3853	<b>Anregungs-/Emissionsmaxima-Wellenlängen:</b> 654 nm / 674 nm
<b>Nanodrop;</b>	<b>Vollständiger Name:</b> keratin 6A	
<b>Wirt:</b> Kaninchen	<b>Berechnete Masse:</b> 60 kDa	
<b>Isotyp:</b> IgG	<b>Beobachtete Masse:</b> 56 kDa	
<b>Immunogen Katalognummer:</b> AG0882		

## Anwendungen

**Geprüfte Anwendungen:**  
FC (Intra)

**Getestete Reaktivität:**  
Human, Maus, Ratte

## Hintergrundinformationen

Keratins are a large family of proteins that form the intermediate filament cytoskeleton of epithelial cells, which are classified into two major sequence types. Type I keratins are a group of acidic intermediate filament proteins, including K9-K23, and the hair keratins Ha1-Ha8. Type II keratins are the basic or neutral counterparts to the acidic type I keratins, including K1-K8, and the hair keratins, Hb1-Hb6. Keratin 6 is a type II keratin. It is used as marker for epidermal hyperproliferation and differentiation. There are three keratin 6 isoforms: keratin 6A, 6B and 6C. They share more than 99% identical DNA sequence.

## Lagerung

**Lagerungsbedingungen:**  
Bei -20°C lagern. Vor Licht schützen. Nach dem Versand ein Jahr stabil.  
**Lagerungspuffer:**  
BS mit 50% Glycerin, 0,05% Proclin300, 0,5% BSA, pH 7,3.  
**Aliquotieren ist nicht notwendig bei -20°C Lagerung**

**\*\*\* 20ul-Größen enthalten 0.1% BSA**

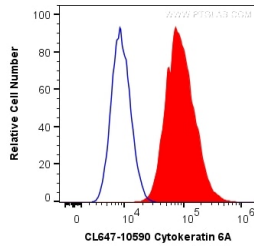
For technical support and original validation data for this product please contact:

T: 1 (888) 4PTGLAB (1-888-478-4522) (toll free in USA), or 1(312) 455-8498 (outside USA)

E: [proteintech@ptglab.com](mailto:proteintech@ptglab.com)  
W: [ptglab.com](http://ptglab.com)

**This product is exclusively available under Proteintech Group brand and is not available to purchase from any other manufacturer.**

## Ausgewählte Validierungsdaten



1X10<sup>6</sup> HeLa cells were intracellularly stained with 0.2 ug Coralite® Plus 647 Anti-Human Cytokeratin 6A (CL647-10590) (red), or 0.2 ug Control Antibody (blue). Cells were fixed with 4% PFA and permeabilized with Flow Cytometry Perm Buffer (PF00011-C).