

Nur für Forschungszwecke

ERK1/2 Polyklonaler Antikörper

Katalog-Nr.:CL647-11257

Vorgestelltes Produkt



Allgemeine Informationen

Katalog-Nr.: CL647-11257	GenBank-Zugangsnummer: BC013992	Reinigungsmethode: Antigen-Affinitätsreinigung
Größe: 100ul , Konzentration: 1000 µg/ml von5595 Nanodrop;	GeneID (NCBI): Vollständiger Name: mitogen-activated protein kinase 3	Anregungs-/Emissionsmaxima-Wellenlängen: 654 nm / 674 nm
Wirt: Kaninchen	Berechnete Masse: 43 kDa	
Isotyp: IgG	Beobachtete Masse: 38-44 kDa	
Immunogen Katalognummer: AG1759		

Anwendungen

Geprüfte Anwendungen:
FC (Intra)

Getestete Reaktivität:
Human, Maus

Hintergrundinformationen

ERK1 and ERK2 belongs to the protein kinase superfamily. It is involved in both the initiation and regulation of meiosis, mitosis, and postmitotic functions in differentiated cells by phosphorylating a number of transcription factors such as ELK-1. ERK1/2 catalized the reaction: ATP + a protein = ADP + a phosphoprotein. It is activated by tyrosine phosphorylation in response to INS and NGF. This antibody can recognize both ERK1 and ERK2 with the molecular mass of 38-44 kDa.

Lagerung

Lagerungsbedingungen:
Bei -20°C lagern. Vor Licht schützen. Nach dem Versand ein Jahr stabil.

Lagerungspuffer:
BS mit 50% Glycerin, 0,05% Proclin300, 0,5% BSA, pH 7,3.

Aliquotieren ist nicht notwendig bei -20°C Lagerung

*** 20ul-Größen enthalten 0.1% BSA

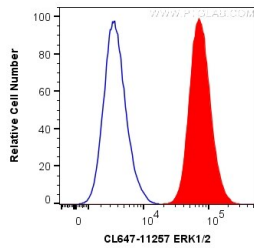
For technical support and original validation data for this product please contact:

T: 1 (888) 4PTGLAB (1-888-478-4522) (toll free in USA), or 1(312) 455-8498 (outside USA)

E: proteintech@ptglab.com
W: ptglab.com

This product is exclusively available under Proteintech Group brand and is not available to purchase from any other manufacturer.

Ausgewählte Validierungsdaten



1X10⁶ HepG2 cells were intracellularly stained with 0.2 ug CoraLite® Plus 647 Anti-Human ERK1/2 (CL647-11257) (red), or 0.2 ug CL647-30000 Rabbit IgG (blue). Cells were fixed with 4% PFA and permeabilized with Flow Cytometry Perm Buffer (PF00011-C).