

Nur für Forschungszwecke

GOLGA2/GM130 Polyklonaler Antikörper

Katalog-Nr.:CL647-11308



Allgemeine Informationen

Katalog-Nr.: CL647-11308	GenBank-Zugangsnummer: BC014188	Reinigungsmethode: Antigen-Affinitätsreinigung
Größe: 100ul , Konzentration: 1000 µg/ml von2801 Nanodrop;	GeneID (NCBI): golgi autoantigen, golgin subfamily a, 2	Empfohlene Verdünnungen: IF 1:50-1:500
Wirt: Kaninchen	Vollständiger Name: golgi autoantigen, golgin subfamily a, 2	Anregungs-/Emissionsmaxima- Wellenlängen: 654 nm / 674 nm
Isotyp: IgG	Berechnete Masse: 111 kDa	
Immunogen Katalognummer: AG1848	Beobachtete Masse: 130 kDa	

Anwendungen

Geprüfte Anwendungen: FC (Intra), IF	Positivkontrollen: IF : HepG2-Zellen,
Getestete Reaktivität: Human, Hund	

Hintergrundinformationen

GOLGA2, also known as GM130, is a 130 kDa cis-Golgi matrix protein which is one component of the detergent and salt resistant Golgi matrix. It is a peripheral membrane protein highly bound to Golgi membrane and localized mainly at the cytoplasmic face of cis-Golgi membrane. Together with its interacting partner proteins, including p115, giantin, GRASP65, and Rab GTPase, GOLGA2/GM130 is involved in the regulation of ER-to-Golgi transport and also in the maintenance of the Golgi structure. Emerging evidence suggest that the GOLGA2/GM130 has potential roles in the control of glycosylation, cell cycle progression, and higher order cell functions such as cell polarization and directed cell migration. (PMID: 20197635)

Lagerung

Lagerungsbedingungen:
Bei -20°C lagern. Vor Licht schützen. Nach dem Versand ein Jahr stabil.
Lagerungspuffer:
BS mit 50% Glycerin, 0,05% Proclin300, 0,5% BSA, pH 7,3.
Aliquotieren ist nicht notwendig bei -20°C Lagerung

***** 20ul-Größen enthalten 0.1% BSA**

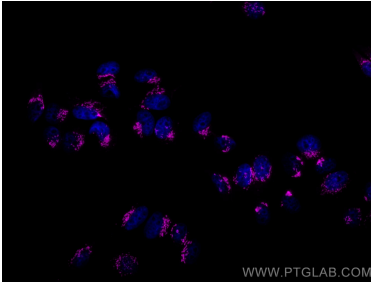
For technical support and original validation data for this product please contact:

T: 1 (888) 4PTGLAB (1-888-478-4522) (toll free
in USA), or 1(312) 455-8498 (outside USA)

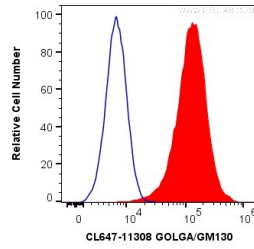
E: proteintech@ptglab.com
W: ptglab.com

This product is exclusively available under Proteintech Group brand and is not available to purchase from any other manufacturer.

Ausgewählte Validierungsdaten



Immunofluorescent analysis of (4% PFA) fixed HepG2 cells using CoraLite® Plus 647 GOLGA2/GM130 antibody (CL647-11308) at dilution of 1:200.



1×10^6 HeLa cells were intracellularly stained with 0.2 μ g CoraLite® Plus 647 Anti-Human GOLGA2/GM130 (CL647-11308) (red), or 0.2 μ g Control Antibody (blue). Cells were fixed with 4% PFA and permeabilized with Flow Cytometry Perm Buffer (PF00011-C).