

Nur für Forschungszwecke

NSD3 Polyklonaler Antikörper

Katalog-Nr.:CL647-11345

Vorgestelltes Produkt



Allgemeine Informationen

Katalog-Nr.: CL647-11345	GenBank-Zugangsnummer: BC012059	Reinigungsmethode: Antigen-Affinitätsreinigung
Größe: 100ul , Konzentration: 1000 µg/ml von54904	GeneID (NCBI): 54904	Anregungs-/Emissionsmaxima-Wellenlängen: 654 nm / 674 nm
Nanodrop;	Vollständiger Name: Wolf-Hirschhorn syndrome candidate 1-like 1	
Wirt: Kaninchen	Berechnete Masse: 1437 aa, 162 kDa	
Isotyp: IgG	Beobachtete Masse: 160-170 kDa, 68-72 kDa	
Immunogen Katalognummer: AG1894		

Anwendungen

Geprüfte Anwendungen:
FC (Intra)

Getestete Reaktivität:
Human, Ratte

Hintergrundinformationen

WHSC1L1, also named as NSD3 and DC28, belongs to the histone-lysine methyltransferase family and SET2 subfamily. It is histone methyltransferase. WHSC1L1 is a potentially transforming oncogenes based on the number of altered phenotypes expressed by the cells. It contains a PWWP-domain that is a methyl-lysine recognition motif involved in histone code modification and epigenetic regulation of gene expression. Knockdown of WHSC1L1 in 8p11-12-amplified breast cancer cells resulted in profound loss of growth and survival of these cells. (PMID: 20940404). This antibody recognize the long isoform (160-170 kDa) and short isoform (68-72 kDa).

Lagerung

Lagerungsbedingungen:
Bei -20°C lagern. Vor Licht schützen. Nach dem Versand ein Jahr stabil.

Lagerungspuffer:
BS mit 50% Glycerin, 0,05% Proclin300, 0,5% BSA, pH 7,3.

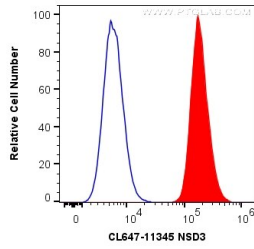
Aliquotieren ist nicht notwendig bei -20°C Lagerung

***** 20ul-Größen enthalten 0.1% BSA**

For technical support and original validation data for this product please contact:
T: 1 (888) 4PTGLAB (1-888-478-4522) (toll free in USA), or 1(312) 455-8498 (outside USA)
E: proteintech@ptglab.com
W: ptglab.com

This product is exclusively available under Proteintech Group brand and is not available to purchase from any other manufacturer.

Ausgewählte Validierungsdaten



1X10⁶ HeLa cells were intracellularly stained with 0.2 ug CoraLite® Plus 647 Anti-Human NSD3 (CL647-11345) (red), or 0.2 ug Isotype Control (blue). Cells were fixed with 4% PFA .